



2019 LIVING HERE

On the First Coast

Your complete guide to living in and visiting Northeast Florida



REGISTER
FIRST COAST
Celebrating 50 years of the
PONTE VEDRA
Recorder

Amelia Island • Jacksonville • The Beaches • St. Augustine



502 PONTE VEDRA BLVD
\$4,995,000
6BD/6BA/2HB • 6,192 sq ft



Jane Chefan
904-463-1179



5396 BENTPIPE COVE ROAD
\$3,099,000
5BD/5BA/3HB • 7,630 sq ft



Nicholas Eklund
904-575-1197



104 SURREY LANE
\$929,000
5BD/5BA • 3,605 sq ft



Moorman & Rowe Group
904-834-1557



158 MUIRFIELD DRIVE
\$998,000
4BD/3BA/1HB • 4,211 sq ft



Moorman & Rowe Group
904-834-1557



137 DORNOCH CT
\$749,900
3BD/3BA/1HB • 3,953 sq ft



Jane Chefan/Jennifer Rowe
904-463-1179/904-834-1557



140 MUIRFIELD DRIVE
\$1,649,000
5BD/6BA/2HB • 5,769 sq ft



Moorman & Rowe Group
904-834-1557



159 PORTSMOUTH BAY
\$699,000
4BD/4BA • 3,381 sq ft



Moorman & Rowe Group
904-834-1557



106 HOLLYHOCK LANE
\$849,000
3BD/3BA/1HB • 3,566 sq ft



Moorman & Rowe Group
904-834-1557



24729 HARBOUR VIEW DRIVE
\$5,485,000
7BR/6BA/2HB • 9,585 SQ FT



Nicholas Eklund & Brian Moorman
904-575-1197/904-810-8744



24756 HARBOUR VIEW DRIVE
\$4,199,000
6BD/7BA/3HB • 9,175 sq ft



Nicholas Eklund
904-575-1197



277 PLANTATION CIRCLE S.
\$938,000
5BD/5BA • 3,961 sq ft



Moorman & Rowe Group
904-834-1557



955 PONTE VEDRA BLVD
\$3,995,000
200' ON THE ATLANTIC OCEAN



Jane Chefan
904-463-1179

SAN JOSE
904.731.9770

PONTE VEDRA BEACH
904.285.7700

AMELIA ISLAND
904.277.6522

RITZ CARLTON AMELIA
904.310.0981



Stunning Riverfront Estate
Exquisitely designed with extensive custom finishes this home instantly makes you feel you've been swept away to a chateau in France. Featuring 5 bedrooms, 6 full baths and 5 half baths.
\$6,900,000.



Intracoastal Waterfront Condo
Mariana San Pablo 2nd-story condo featuring open floorplan, luxury amenities, and private balcony with water views. 2 bedrooms, 2.5 baths.
\$475,000



Most Desired Oceanfront Location in NE Florida
This first-floor unit was totally renovated with the finest finishes & craftsmanship. Includes an office, staurnia floors, mahogany doors & built-in custom cabinetry. 2 bedrooms & 2 bathrooms + powder room.
\$1,700,000



The Perfect Beach Escape
Located between The Lodge and the Cabana Beach Club, this second-story condo gives elevated views of the beach while maintaining the unit's privacy and security. Includes a large covered balcony and ground floor storage. 3 bedrooms & 3 bathrooms.
\$1,625,000



Architectural Gem on the Beach
Designed by Residential Designs by Kevin Gray, Inc. and built by Elwood Collier, this oceanfront home reflects the merging of beach living and architecture! Featuring 4 bedrooms, 5 full and 3 half baths.
\$7,995,000.



Oceanfront Oasis
Stunning 210 ft oceanfront estate on private gated 2-acre lot with 27 ft elevation. Impeccable, quality home with spectacular views throughout. 5 bedrooms, 6 full/2 half baths.
\$5,750,000



Build your dream home on Ponte Vedra Blvd!
One of the last remaining 150 ft pristine oceanfront lots in the sought after estate section of Ponte Vedra Blvd. This incredible lot sits comfortably protected at 27 ft elevation and a perfect distance from the shoreline.
\$2,500,000



Rare Waterfront Opportunity on Roscoe
3 purchasing options: Combine lots to create one of the last opportunities to have 150' frontage on the Intracoastal! Or this beautiful 150 x 400 lot can be divided into 2 -75' lots.
\$1,399,000/\$699,000 each



Furnished Coastal Cottage
With direct beach access and an open floor plan this is the ideal vacation home or rental property. Features new roof, 2 new AC units, no HOA, and is being sold furnished. 5 bedrooms, 4 baths.
\$1,225,000



Waterfront Retreat
Located on a freshwater lagoon this home offers the best of both indoor and outdoor living. Designed for entertaining and enjoying the Florida weather, the backyard features a summer kitchen, two fire pits, and pool. 5 bedrooms, 4.5 baths. **\$1,216,000**



Oceanfront Retreat
Built to take advantage of the captivating water views with 150 ft. of ocean frontage this 1.45-acre lot is the ideal place to add your personal touches and make your private beach retreat. 6 bedrooms, 6.5 baths.
\$3,750,000



Design Oceanfront Oasis
With over 230 ft. of ocean frontage, this lush property will inspire your inner visionary and designer. Whether you are looking to build your dream home or renovate, this 1.6-acre estate makes for the ideal place to call home. 4 bedrooms, 4.5 baths. **\$3,900,000**



ELIZABETH
HUDGINS



Elizabeth Hudgins, REALTOR®

904.553.2032 cell

904.280.0486 office direct

elizabeth@elizabethhudgins.com

www.elizabethhudgins.com

"From Cottages to Castles"



**BERKSHIRE
HATHAWAY**
HomeServices

Florida Network
Realty

TABLE OF CONTENTS



24



6



27



42



50

Annual Events6
 Specialty Schools14
 Senior Resources18
 Hospitals.....20
 Animal Shelters.....22
 Sports24
 Parks & Recreation.....27
 Historic Landmarks31
 Libraries34
 Museums36
 Hotels42
 Directory.....47
 Preparing for a Hurricane.....50

LIVING HERE STAFF

FLORIDA MARKET MANAGER
 Hugh Osteen
 hugh@opcfla.com

PUBLISHER
 Susan Griffin
 susan@opcfla.com

EDITOR
 Jon Blauvelt
 jonb@opcfla.com

PUBLICATION DESIGNER
 Paris Moulden
 paris@opcfla.com

CONTRIBUTORS
 Amber Lake
 amber@opcfla.com
 Daniela Toporek
 daniela@opcfla.com

SENIOR ACCOUNT EXECUTIVE
 Ed Johnson
 ed@opcfla.com

ACCOUNT EXECUTIVE
 Kristin Flanagan
 kristin@opcfla.com

ACCOUNT EXECUTIVE
 Kimberly Aloia
 kimberly@opcfla.com

SALES ASSISTANT
 April Snyder
 aprils@opcfla.com



Ponte Vedra Recorder, 1102 A1A N., Unit 108, Ponte Vedra Beach, FL, 32004, (904) 285-8831

Photo credits: Cover photos courtesy of Visit Jacksonville, Flagler College, Amelia Island, The National Park Service and by Micah Green and the Ponte Vedra Recorder staff

FLORIDA LIVING



MLS 996036 | 224 Sea Island Dr

Watson Realty Corp. and Luxury Portfolio: Luxury is our business

An exceptional property requires a tailored approach to pricing, marketing, and negotiation. Watson Realty Corp. represents a level of expertise that gives you the confidence that comes from working with the very best. We research and track the latest trends in luxury to help us understand how to position your property and effectively reach today's affluent consumer. A sound advertising and marketing plan requires knowing your buyer, and we know them better than anybody.

WatsonRealtyCorp.com

LuxuryPortfolio.com

PONTE VEDRA

904.285.6300

615 Highway A1A

Ponte Vedra Beach, FL 32082



Photo by Jon Blauvelt



Photo by Benjamin Naim

ST. JOHNS COUNTY

St. Augustine Lions Seafood Festival

www.lionsfestival.com

March 27-29, 2020, Francis Field in St. Augustine

Seafood, live music and family fun — all in the heart of the nation's oldest city. With a wide variety of fresh seafood, art and attractions, there's something for everyone at this annual celebration of food and creativity.

Rhythm & Ribs

rhythmandribs.net

April 10-12, 2020, Francis Field in St. Augustine

Enjoy award-winning barbecue, live music, arts and crafts, children's games, rides and activities at one of St. Johns County's staple events. Rhythm & Ribs is an all-volunteer effort organized by the St. Augustine Sunrise Rotary Club. More than 340 volunteers put in more than 2,000 hours to run the three-day festival, which is attended by thousands of visitors each year.

Roscolusa Songwriters Festival

roscolusa.com/home

April 2020 (exact dates TBD), Nocatee Station Field in Ponte Vedra

Started in 2012, this one-night event brings songwriters from Nashville to Ponte Vedra to share the stories behind popular songs and perform them live on stage. Attendees also enjoy food and drinks, kids activities and more. A portion of the proceeds benefit the Tom Coughlin Jay Fund, a nonprofit organization helping local families tackle childhood cancer.

St. Augustine Greek Festival

www.staugreekfest.com

Oct. 11-13, 2019, Francis Field in St. Augustine

The St. Augustine Greek Festival celebrates all things Greek, including food, dancing, music and heritage. Holy Trinity Greek Orthodox Church sponsors the annual event, which features traditional Greek food, dancing and music, as well as an outdoor marketplace and children's activities.

Nights of Lights

www.visitstaugustine.com/event/nights-lights

Nov. 23, 2019 to Jan. 31, 2020, St. Augustine

St. Augustine's Nights of Lights is one of the top holiday lighting displays in the world, according to National Geographic. After sunset, millions of white lights illuminate the historic district. Experience the holiday glow on foot, by open-air trolley or on a romantic carriage ride.

Palm Valley Boat Parade

palmvalleyboatparade.com

December 2019 (exact date TBD), Intracoastal Waterway in Palm Valley

Beginning just south of the Palm Valley Bridge and traveling north through the Palm Valley cut to the end of Marsh Landing, this event provides fun for all ages and helps ring in the holiday season in a truly Florida fashion.

St. Augustine Christmas Parade

www.facebook.com/StAugustineChristmasParade

First Saturday of December each year

St. Augustine's annual Christmas Parade features floats, marching bands, cars, horses and the grand arrival of Santa. The parade begins on San Marco Avenue at the Mission of Nombre de Dios and continues through the downtown streets of historic St. Augustine along the bayfront.

Beach Blast Off

www.sabevents.com/beach-blast-off

New Year's Eve, St. Augustine Beach

Head to the St. Johns County Ocean and Fishing Pier in St. Augustine Beach on New Year's Eve to bring in the new year. The event features live entertainment, food, a kids fun zone area, carnival rides, a fireworks show and more.

UNIQUE BEACHES PROPERTIES



THE PLANTATION AT PONTE VEDRA

This special pool home was designed for easy living and entertaining, all on one level.

Separate bedroom suites, well-appointed office, 4-car garage.

\$1,330,000



OLD PONTE VEDRA

Live like you're on vacation every day...

this amazing lap pool is the focal point from every room!

Spacious 5br with stunning new kitchen, close to beach access!

\$849,000



SAWGRASS ISLAND

Set on an acre, this 5br home enjoys private outdoor spaces including pool, putting green and summer kitchen, plus views of the TPC Sawgrass Stadium Course!

\$1,898,000.



PONTE VEDRA BOULEVARD

This Las Mirandas condominium has it all - location near clubs, private parking garage, open plan with high ceilings, and purchase can include furniture! This is a "10"!

\$1,498,000



SAWGRASS PLAYERS CLUB

Outstanding contemporary designed to bring the outdoors in. Views are of the 9th hole of Dye's Valley Course at TPC Sawgrass, plus forests and lakes. Nirvana!

\$1,097,000



MARSH LANDING

The flow of this home was designed for entertaining. Special features include a 2-story office, built-ins for displays and books, interesting ceiling treatments and storage galore.

Private dead-end street.

\$1,350,000



THE MILAM HOUSE

Known the world over, this oceanfront Modernist masterpiece sits on a high dune overlooking beautiful Ponte Vedra Beach. 4 brs in main house plus guest quarters.

\$4,445,000



INTRACOASTAL

Just completed, this stunning 4br waterfront pool home has many separate entertaining areas both inside and out. The open plan includes pocketing sliders leading to the pool deck and boat dock.

\$2,650,000



Clareberryrealestate.com

Clare Berry

BROKER

Resourceful...Responsible...Respected
Serving Northeast Florida's Real Estate Needs Since 1985

clare@clareberry.realtor
C 904.382.5875



Photo by Susan Griffin



Photo by Jon Blauvelt

Nocatee Farmers Market

www.nocatee.com

Every third Saturday of the month from 10 a.m. to 2 p.m., Nocatee Station Field in Ponte Vedra

Nocatee's farmers market includes a plethora of fresh local foods. Find produce, herbs, homemade jams and jellies, handmade baked goods and crafts from more than 70 vendors. Bring the family and enjoy barbeque, shaved ice and more while shopping the themed monthly events.

Palm Valley Farmers Market

www.facebook.com/PalmValleyFarmersMarket/

Every Tuesday from 1-4 p.m., Palm Valley Community Center in Ponte Vedra Beach

This hearty little market packs a lot of produce and artisan goods, featuring everything from milk and fresh seafood to homemade jams, cheeses and biscotti.

Old City Farmers Market

www.staugamphitheatre.com/p51-farmer-s-market.aspx

Every Saturday from 8:30 a.m. to 12:30 p.m., The Amp in St. Augustine

Handmade arts and crafts, freshly caught seafood, organic fruits, vegetables and produce, and live entertainment make this market a St. Augustine staple.

First Friday Art Walk

www.artgalleriesofstaugustine.com/first-friday-artwalk/

First Friday of every month from 5-9 p.m., Downtown St. Augustine

The Art Walk was founded and is sponsored by The Art Galleries of St. Augustine. The monthly event also includes live music. When Art Walk ends, the after parties begin at area clubs and restaurants. Complimentary art walk shuttles run from 6-9 p.m.

DUVAL COUNTY

DONNA Marathon Weekend

thedonnafoundation.org

Feb. 7-9, 2020, Atlantic Beach, Neptune Beach, Jacksonville Beach and Ponte Vedra Beach

DONNA Marathon Weekend is held annually on the second weekend of February. The event attracts more than 10,000 runners and supporters from all 50 states and several countries. 26.2 with DONNA, the weekend's main event held on Marathon Sunday, is the only marathon in the United States dedicated to breast cancer research, awareness and care.

Springing the Blues

www.springingtheblues.com

April 2020 (exact date TBD), Seawalk Pavilion in Jacksonville Beach

Springing the Blues is one of the oldest and largest blues festivals on the East Coast. Dozens of musicians perform at the Seawalk Pavilion during a weekend in April. The festival attracts more than 150,000 attendees.

World of Nations

www.jaxworldofnations.com

February 2020 (exact date TBD), Metropolitan Park in Jacksonville

Experience the cuisine, artistry and customs from lands near and far. The City of Jacksonville and local multicultural friends bring the world to you with this cultural destination that showcases the unique diversity of our planet, and puts the wonderful sights, sounds and tastes of different nations within your reach.

Jacksonville Jazz Festival

www.jacksonvillejazzfest.com

May 2020 (exact date TBD), Downtown Jacksonville

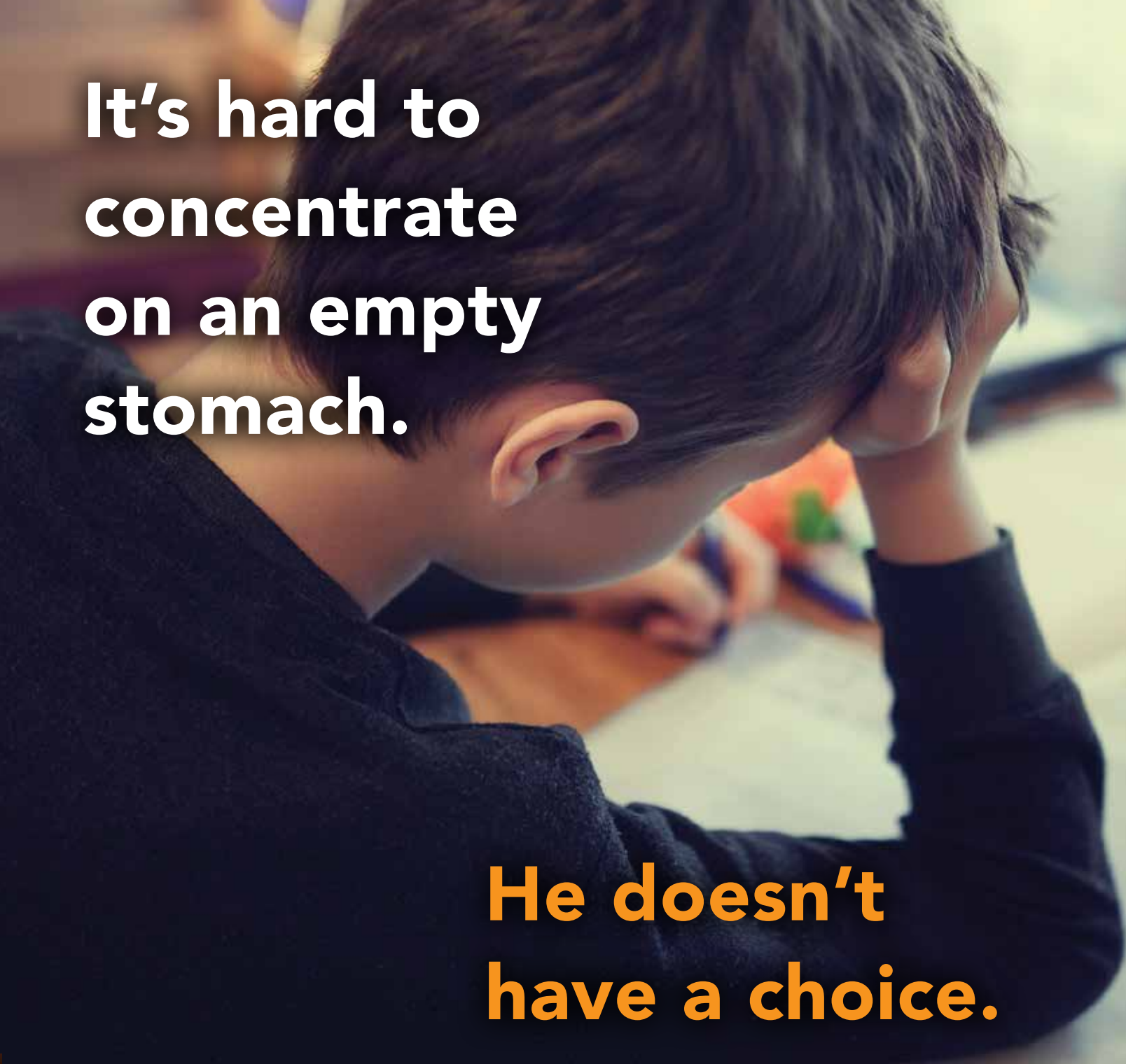
This annual weekend event has been a Jacksonville tradition for more than 30 years and attracts visitors from all over the world. As one of the largest Jazz festivals in the country, visitors can expect to see the city come alive with the sounds of a line-up spanning 15 blocks of Downtown Jacksonville.



Photo courtesy of The Donna Foundation



Photo courtesy of SurfDog Photography



**It's hard to
concentrate
on an empty
stomach.**

**He doesn't
have a choice.**

In Northeast Florida, the heartbreaking reality is that **more than 81,000 kids** will go to bed tonight without dinner.



FEEDING[®]
NORTHEAST FLORIDA
Your Community Food Bank™

HELP US FUEL OUR FUTURE GENERATION AT www.feedingnefl.org



Photo courtesy of Deck the Chairs



Photo courtesy of Visit Jacksonville



Photo courtesy of Visit Jacksonville

Adventure Landing Winterfest

www.jaxwinterfest.com

*November to January 2019 (exact dates TBD),
Jacksonville Beach*

Adventure Landing transforms into a winter wonderland for days and nights of fun starting in November. With a set of attractions that includes an outdoor ice rink, a hologram light display and nightly “snowfall,” Adventure Landing makes the perfect destination for family fun in the holiday season.

Deck the Chairs

deckthechairs.org

*November to January 2019 (exact dates TBD),
Latham Plaza and Seawalk Pavilion, Jacksonville Beach*

Jacksonville Beach Deck The Chairs (JBDTC) is an annual lighted sculptural exhibit using the iconic chairs of The American Red Cross Life Saving Corps. JBDTC gathers the community to decorate and display the Beaches lifeguard chairs during the month of December to promote local business, instill public pride and share cultural diversity through creative expression.

Jax Illuminations Drive Thru Holiday Light Show

jaxilluminations.com

*November to December 2019 (exact dates TBD),
Morocco Shrine Center in Jacksonville*

Enjoy the magic of driving through a mile of holiday lights that are synchronized to holiday music. Come see 1 million LED lights that dance, twinkle and sparkle to some of your favorite holiday songs.

Jacksonville Light Boat Parade

specialevents.coj.net/Special-Events/Light-Boat-Parade.aspx

Nov. 30, 2019, St. Johns River in Downtown Jacksonville

A dazzling display of light-strung boats on the St. Johns River is capped with a firework spectacular featuring a “waterfall” of lights cascading over the bridges on the water.

Christmas Made in the South

www.madeinthesouthshows.com/jacksonville-christmas.html

Nov. 29 to Dec. 1, 2019, Prime F. Osborn III Convention Center in Jacksonville

Christmas Made in the South is focused on keeping the world of fine artisans and craftspeople vibrant. Exhibitors will be there all three days demonstrating and selling their handcrafted works.

ZooLights at the Jacksonville Zoo and Gardens

zoolights.jacksonvillezoo.org

*December 2019 to January 2020 (exact dates TBD),
Jacksonville Zoo and Gardens*

Celebrate the holiday season and create a family tradition admiring the sparkling lights and brilliant hues at the Jacksonville Zoo and Gardens ZOOLights event. Thousands of LED lights are on display at the zoo along with lighted animal sculptures and a forest of lighted trees and animal silhouettes. Event activities include live holiday music, a lighted train, carousel rides, a 4-D theater, marshmallow roasting and more.

New Year's Eve in Downtown Jacksonville

specialevents.coj.net/Special-Events/New-Year-s-Eve.aspx

Dec. 31, 2019, Downtown Jacksonville along St. Johns River

Say goodbye to 2019 and ring in the New Year with a fireworks display over the St. Johns River. Make your way down to the waterfront with friends or family before midnight to snag a great seat for the festivities. Fireworks will begin exactly at midnight.

Beaches Green Market

diglocal.org/markets

Every Saturday from 2-5 p.m., Jarboe Park in Neptune Beach

Vendors at the Beaches Green Market offer a wide selection of in-season, local and organic produce, local all-natural meats, free-range eggs, cut flowers, locally roasted organic coffees, edible plants and trees, orchids and more.

Jaxsons Night Market

www.facebook.com/JaxsonsNightMarket

Every third Thursday from 5:30-9 p.m.,

Hemming Park in Jacksonville

Jaxsons Night Market is held every third Thursday from 5:30-9 p.m., showcasing local farmers, local beer, food trucks, fashion trucks, craft and food vendors, live music and much more.

Jacksonville Farmers Market

www.jaxfarmersmarket.com

Daily from dawn to 6 p.m., 1810 West Beaver St. in Jacksonville

This daily, open-air market sees more than 1 million visitors every year and is best known for its featured ethnic and specialty import items, many of which are hard to find elsewhere.

Operating for over 100 years, its selection of everything from fruits and vegetables to seafood and tropical specialties are a testament to its history.



Photo courtesy of Visit Jacksonville

Riverside Arts Market

www.riversideartsmarket.com

Every Saturday from 10 a.m. to 3 p.m., 715 Riverside Ave. in Jacksonville

The Riverside Arts Market is more than a place for food; it's an outdoor storefront for artists, nonprofits, food vendors, farmers and more to provide fun, entertainment and produce for a growing community. In addition to several vendors, this green market features live music and morning yoga.

North Beaches Art Walk

www.nbaw.org

Third Thursday of every month from 5-9 p.m., Beaches Town Center

The event features more than 55 participating artists and live performers. Local venues set the backdrop for this monthly destination and community gathering.



Photo courtesy of Visit Jacksonville

Jax Beach Art Walk

www.betterjaxbeach.com/jax-beach-art-walk.html

Second Tuesday of every month from 5 to 9 p.m., along First Street from Beach Boulevard North to Fifth Avenue North

The Jax Beach Art Walk showcases the talent of local artists and the businesses in the community. Many of the participating businesses will have live music and specials throughout the art walk.

Jacksonville Downtown Art Walk

www.jacksonvilleartwalk.com

First Wednesday of every month from 5-9 p.m., Downtown Jacksonville

Thousands of enthusiasts attend each month to discover several participating venues, including art and cultural venues, restaurants and bars, downtown businesses and more.

Classic, Country Club
and Resort Wear for

WOMEN
and
CHILDREN

at the

**LEMON
TWIST**
-BOUTIQUE-



Lily

Bailey Boys

Joseph Ribkoff

sailor - sailor

THE BEAUFORT
BONNET COMPANY

JUDE CONNALLY

Sawgrass Village • 340 Front Street, Suite 730
904.280.5955 • lemontwistboutique.com

Check Us Out

Monday-Saturday, 10am-6pm
Sunday 11am-5pm

[lemontwistpv](https://www.instagram.com/lemontwistpv)

**ESTATE
PLANNING**

**WEALTH
PLANNING**

**ASSET
PROTECTION**

**BUSINESS
PLANNING**



John R. Crawford, Esq.



Kristine M. Scott, Esq., LL.M.

**PRESERVE YOUR WEALTH.
PRESERVE YOUR FUTURE.**

MarksGray

904.285.8760 | MARKSGRAY.COM
JACKSONVILLE JACKSONVILLE BEACH

NASSAU COUNTY

Amelia Island Concours d'Elegance

www.ameliaconcours.org

• March 5-8, 2020, Ritz-Carlton Amelia Island

An automotive charitable event, the Amelia Island Concours d'Elegance is one of the top auto shows in the country. Cars are rated for authenticity, function, history, style and quality of restoration. Proceeds from the event support Community Hospice of Northeast Florida, as well as other local charities.

Katie Ride for Life

www.katiecapesfoundation.donordrive.com

April 2020 (exact date TBD), Fernandina Beach

The Annual Katie Ride for Life is a cycling event to help raise awareness and funds for organ donation. With biking distances of 18 to 63 miles to choose from, this is a fully-supported cycling event for riders of all levels. The course is flat and scenic, taking riders along Northeast Florida islands and waterways.

Isle of Eight Flags Shrimp Festival

www.shrimpfestival.com

May 2020 (exact date TBD), Downtown Fernandina Beach

The annual shrimp festival includes a number of vendors, live music, a fireworks display, the Miss Shrimp Festival pageant, a pirate parade and of course lots of shrimp and other seafood.



Photo by Jon Blauvelt



Photo by Susan Griffin



ROSENBLUM'S
CONFIDENCE INSPIRED.



2400-203 S. Third St.
Jacksonville Beach, FL
(904) 247-9755

rosenblumsonline.com



Ready to Grow your Business?

We have 23 years of experience and passion for developing and growing brands, through the latest methods and best practices in:

- Website Development
- SEO (Search Engine Optimization)
- Brand Creation
- Marketing Design

Call to schedule a consultation,
904.878.0881



Creative solutions
to optimize your business.

www.jlaceytaylor.com

Ritz-Carlton Christmas Tree Lighting

www.ritzcarlton.com/en/hotels/florida/amelia-island
November 2019 (exact date TBD), Amelia Island



Photo courtesy of the Ritz-Carlton Amelia Island

The annual Christmas Tree Lighting is Amelia Island's official start to the Christmas season with thousands of sparkling lights glittering throughout the resort. Guests enjoy holiday refreshments, live entertainment and the lighting of a towering 50-foot tree in the courtyard of the Ritz-Carlton at the oceanfront, and the arrival of Santa Claus. The ceremony typically finishes with a holiday fireworks display.

Fernandina Beach Market Place farmers market

ameliaislandmarketplace.com
Every Saturday from 9 a.m. to 1 p.m., North Seventh Street in Fernandina Beach

This market hosts a choice selection of locally grown and produced goods, while the adjacent Fernandina Beach Arts Market stocks arts and crafts on the second and fourth Saturdays of the month.



Photo by Paris Moulden

Artrageous Art Walk

www.islandart.org/artrageous-artwalk
Second Saturday of each month from 5-8 p.m., Downtown Fernandina Beach

Participating galleries host art events where residents and tourists alike can enjoy art in various media that each gallery has to offer in addition to meeting the artists.

STOP SMOKING

With hypnotism and Acupuncture

2 TREATMENTS \$150

Only 2 people have ever returned for the second treatment!

Constance Wulf A.P.

Acupuncture Physician • Medical Hypnotist

904.994.3709

acuwolf@yahoo.com • acuwolf.com

6000-A Sawgrass Village Circle, Suite 10
Ponte Vedra Beach, FL 32082



Ponte Vedra
**Wellness
Center**

We keep your spine in align!

www.pontevedrawellnesscenter.com

Family Chiropractic Care

in Ponte Vedra Beach & Nocatee Town Center

- Adult & Senior Chiropractic Care
- Pediatric Care
- Chiropractic Neurology
- Spinal Decompression
- Physical Therapy
- Personal Fitness Training
- Massage Therapy
- Weight Loss and Nutrition
- Prenatal/Postpartum Care (Webster Cert)
- Balance/Fall Prevention
- Auto Accident Care

Suffering with Disc Pain - and looking for non-surgical relief?

Spinal Decompression Therapy can be very effective in treating ruptured discs, spinal stenosis, sciatica or when surgery has failed to bring relief. This type of therapy is safe, proven effective and affordable.



EFFECTIVE FOR:

- ✓ RUPTURED DISCS
- ✓ SPINAL STENOSIS
- ✓ SCIATICA
- ✓ FAILED SURGERY

ADVANTAGES:

- ✓ EXTREMELY EFFECTIVE
- ✓ FDA CLEARED
- ✓ NON-SURGICAL
- ✓ AFFORDABLE COST

Let us help you get relief with this special offer!



Dr. Erika R. Hamer, DC, DIBCN, DIBE
Board Certified Chiropractic Neurologist
Practice Owner/Founder

DECOMPRESSION SPECIAL

\$59 INITIAL VISIT, X-RAYS
NEUROLOGICAL EXAM
& TREATMENT
RECOMMENDATIONS

A \$340 value

CALL TODAY & SCHEDULE YOUR APPOINTMENT!

Ponte Vedra Beach/273-2691

100 Corridor Rd South, # 220, Ponte Vedra Beach, FL 32082

Nocatee Town Center/834-2717

205 Marketside Ave, #200, Ponte Vedra, FL 32081

THE PATIENT AND ANY OTHER PERSON RESPONSIBLE FOR PAYMENT HAS THE RIGHT TO REFUSE TO PAY, CANCEL PAYMENT OR BE REIMBURSED FOR PAYMENT FOR ANY SERVICE, EXAMINATION OR TREATMENT WHICH IS PERFORMED AS A RESULT OF AND WITHIN 72 HOURS OF RESPONDING TO THE ADVERTISEMENT FOR THE FREE, DISCOUNTED FEE, OR REDUCED FEE SERVICE, EXAMINATION OR TREATMENT. CAN NOT BE COMBINED. **MAY NOT BE VALID FOR FEDERAL PROGRAMS INCLUDING MEDICARE . WITH THIS AD AND ONE TIME USE ONLY. SPECIAL OFFER EXPIRES 05/30/2020.**



SPECIALTY SCHOOLS

ST. JOHNS COUNTY

Florida School for the Deaf and Blind

207 North San Marco Ave.

St. Augustine, FL 32084

(904) 827-2200

www.fsdbk12.org

The Florida School for the Deaf and the Blind aims to utilize all available talent, energy and resources to provide free appropriate public education for eligible sensory-impaired students of Florida.

Collage Day School

171 Canal Blvd.

Ponte Vedra Beach, FL 32082

(904) 900-1439

Collage Day School is an academically challenging, independent day school designed to educate students from three months through sixth grade. The school provides an integrative curriculum that encourages creative thinking and moving ahead in areas that have been excelled while also allowing extra time and work for subjects that may need more attention.

First Coast Technical College

2980 Collins Ave.

St Augustine, FL 32084

(904) 547-3282

www.fctc.edu

FCTC offers a wide range of programs, such as health sciences, law, public safety and security, agriculture, early childhood education, hospitality and tourism and more.

Moultrie Montessori School

37 S. Dixie Highway

St. Augustine, FL 32084

(904) 826-0216

www.moultriemontessori.com

The mission of the Montessori Schools is to create an environment where the spirit of the child is nurtured so that knowledge, skills and values are developed for life. The schools also aim to contribute to a community of friendship, sharing and mutual support. The Montessori method believes that cognitive learning and movement are extremely correlated, so at Montessori, students learn by actively participating in projects and activities.



EPISCOPAL
SCHOOL of JACKSONVILLE

SEEK
BOLDLY



Inspiring students to be their best with the region's most balanced and enriching college prep experience.

ACADEMICS



ARTS



ATHLETICS



SPIRITUAL LIFE



GRADES 6-12 | 904.396.7104 | ESJ.ORG | 4455 ATLANTIC BLVD.

DUVAL COUNTY

North Florida School of Special Education

223 Mill Creek Road
Jacksonville, FL 32211
(904) 724-8323

www.northfloridaschool.org

Focused on children with intellectual and developmental differences (IDDs), the North Florida School of Special Education combines quality academic and classroom instruction with vocational training, job coaching, enrichment studies and social skills instruction. NFSSE also offers art, music and physical education to create an environment where students are nurtured, stretched and unified in their quest for knowledge.

Broach School

Located in Orange Park, South Jacksonville, West Jacksonville and Nocatee
(904) 637-0300

www.broachschool.com

The Broach School is experienced in working with students with special needs such as ADHD, dyslexia, developmental disabilities, autism spectrum disabilities and more.

The Discovery School

102 15th St. South
Jacksonville Beach, FL 32250
(904) 247-4577

www.thediscoveryschool.org

For children from 18 months to 14 years old, the Discovery School is an independent day school that educates students in a unique program blending the Montessori curriculum with the International Baccalaureate Primary Years Program framework. With a low student-to-teacher ratio and multi-age classes, each child can have an individual experience while being in an academically challenged learning environment. Students of all ages participate in foreign language, STEAM and the school's Youth Philanthropy Program.

Duval Charter School at Baymeadows

7510 Baymeadows Way
Jacksonville, FL 32256
(904) 271-4127

www.baymeadow charter.org

Duval Charter School at Baymeadows is a tuition-free public charter school educating students in grades K-12. The school advocates personalized learning plans, parent involvement, access to ACE student information system and school uniforms to instill a sense of pride in school.

Jacksonville School for Autism

900 Cypress Green Drive
Jacksonville, FL 32256
(904)732-4343

www.jsakids.org

The Jacksonville School for Autism (JSA) is a nonprofit private school and full-service K-12 education center for students and young adults along the autism spectrum. The school is dedicated to helping students build foundations for academic and social success through individual learning assessments, a low teacher-to-student ratio and a team of supportive staff.

J-Tech Institute

8813 Western Way
Jacksonville, FL 32256
(877) 447-0442

www.jtech.org

At the J-Tech Institute, experts are training new generations of automotive and transportation industry professionals in Jacksonville. The school offers automotive and diesel technology or commercial truck driving training that will move the futures of gearheads in the direction towards their dreams.

The Florida School for the Deaf and the Blind is a tuition-free state public school and outreach center available to eligible Pre-K and K-12 students who are deaf/hard of hearing or blind/visually impaired. At FSDB, students discover how to *do more, be more, and achieve more* for lifelong success.

FSDB

Florida School for the Deaf & the Blind
St. Augustine, FL 32084
www.fsdbk12.org

[f](#) FloridaDeafandBlind [t](#) FLDeaf_Blind [i](#) FLDeaf_Blind [v](#) FSDB [v](#) FSDBVideos

WHERE
Potential
GROW

Building character through innovative learning and whole child education.

jcds.com | 904.641.6644

JACKSONVILLE COUNTRY DAY SCHOOL

Psych Ed Connections™

SPECIALTIES

- Anxiety/Stress
- Depression
- ADD/ADHD
- Autism Spectrum
- Career/Work
- Relationships
- Grief/Loss
- Testing & Evaluation
- Parenting
- Life Transitions
- Medication Management

SERVICES

- Individual, Couples & Family Counseling
- Play Therapy
- Testing for Learning Disabilities, ADHD & Autism
- Diagnosis of Mood Disorders & other mental health issues
- 'Gifted' Evaluation & Diagnosis
- Individual Tutoring (Office or In-Home)
- ADD/ADHD/Executive Function Coaching
- Parent Coaching
- Medication Management



Psych Ed Connections is a psychological and educational private practice located in the Nocatee Town Center, serving children, teens, adults and families. Our team of mental health professionals and educators are committed to combining the leading research with clinical expertise in order to best serve our clients.



Located in Nocatee Town Center

460 Town Plaza Ave. Suite 230, Ponte Vedra Beach, FL 32081

www.PsychEdConnections.com • 904.834.9292 • info@psychedconnections.com

be BOLD!

Christ Episcopal Church



all are welcome!

our locations

400 San Juan Drive, Ponte Vedra Beach
Serenata Beach Club, S. Ponte Vedra

904.285.6127

christepiscopalchurch.org

St. Augustine! The Ocean! The Reef!



Enjoy ocean views from every table.

Expanded Outdoor Seating

Serving Lunch & Dinner

Live Music Friday & Saturday

Fresh Fish, Seafood, Steaks & So Much More

Voted BEST HAPPY HOUR and BEST BRUNCH in St. Augustine

The Atlantic Ocean! A constant view that never looks the same! The Reef is one of the few remaining truly oceanfront restaurants in Northeast Florida. Unrivaled views, Great food and wine. Just 20 minutes South of Ponte Vedra on A1A.

4100 Coastal Highway A1A North • (904) 824-8008



www.thereefstaugustine.com

3/2018/09-01

LIVE ON STAGE! JUNE 12 - JULY 28



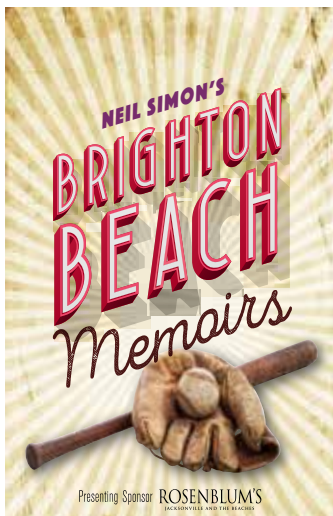
Disney THE LITTLE MERMAID

Presenting Sponsor Snyder AIR CONDITIONING

COMING SOON!



AUG. 7 - SEPT. 15



SEPT. 18 - OCT. 13

BEST OF JAX WINNER
Alhambra
theatre & dining

GET YOUR TICKETS TODAY!
CALL 904-641-1212
or visit alhambrajax.com



SENIOR RESOURCES

ST. JOHNS COUNTY COUNCIL ON AGING

(www.coasjc.com)

Senior Community Centers

THE PLAYERS Community Senior Center

175 Landrum Lane
Ponte Vedra, FL 32082
(904) 280-323

Monday: 8 a.m. to noon

Tuesday to Thursday:
8 a.m. to 4 p.m.

Friday: Noon to 4 p.m.

River House

179 Marine St.
St. Augustine, FL 32084
(904) 209-3655

Monday to Thursday:
8:30 a.m. to 4 p.m.

Friday: 8:30 a.m. to noon.

Coastal Community Center

180 Marine St.
St. Augustine, FL 32084
(904) 209-364

Monday to Friday: 9:30 a.m. to noon

Trout Creek Park Pavilion & Community Senior Center

6795 Collier Road
Orangedale, FL 32092
(904) 522-1611

Monday, Wednesday and Friday:
9 a.m. to 1 p.m.

Hastings Senior Center

140 Gilmore St.
Hastings, FL
(904) 729-9161

Monday, Wednesday and Friday:
10 a.m. to 1 p.m.

DUVAL COUNTY COMMUNITY AND SENIOR CENTER SERVICES

(www.coj.net/departments/parks-and-recreation/senior-services/community-and-senior-center-services)

Note: Each of the below centers are open Monday to Friday 8 a.m. to 5 p.m., except for the Windy Hill Senior Center.

Senior Community Centers

Bennie Furlong Beaches Senior Center

281 19th Ave. South
Jacksonville Beach, FL 32250
(904) 241-3796

Frances Padgett Arlington Senior Center

(currently closed for renovations)
1078 Rogero Road
Jacksonville, FL 32211
(904) 723-6142

Charlie T. Joseph Senior Center

6943 Buffalo Ave.
 Jacksonville, FL 32208
 (904) 768-4762

Clanzel T. Brown Community Center

4575 Moncrief Road
 Jacksonville, FL 32209
 (904) 764-8752

Hammond Senior Center

3312 West 12th St.
 Jacksonville, FL 32254
 (904) 786-8554

J.S. Johnson Senior Center

1112 Jackson St.
 Jacksonville, FL 32204
 (904) 630-0949

Jim Fortuna Senior Center

11751 McCormick Road
 Jacksonville, FL 32225
 (904) 996-0211

Lane Wiley Senior Center

6710 Wiley Road
 Jacksonville, FL 32210
 (904) 783-6589

Leroy D. Clemons Senior Center

55 N. Jackson Ave.
 Jacksonville, FL 32220
 (904) 693-4918

Lincoln Villa Senior Center

7866 New Kings Road
 Jacksonville, FL 32219
 (904) 765-2654

Longbranch Senior Center

4110 Franklin St.
 Jacksonville, FL 32206
 (904) 630-0893

Louis Dinah Senior Center

1805 Flag St.
 Jacksonville, FL 32209
 (904) 630-0728

Mandarin Senior Center

3848 Hartley Road
 Jacksonville, FL
 (904) 262-7309

Mary L. Singleton Senior Center

150 East First St.
 Jacksonville, FL 32206
 (904) 630-0995

Maxville Senior Center

18065 Pennsylvania Ave.
 Jacksonville, FL 32234
 (904) 289-7157

Moncrief Senior Center

5713 Teeler Ave.
 Jacksonville, FL 32208
 (904) 764-0330

Oceanway Senior Center

12215 West Sago Ave.
 Jacksonville, FL 32218
 (904) 696-4331

Riverview Senior Center

9620 Water St.
 Jacksonville, FL 32208
 (904) 765-7511

Wallace Small Senior Center

1083 Line St.
 Jacksonville, FL 32209
 (904) 630-0724

Windy Hill Senior Center

10540 Anders Blvd.
 Jacksonville, FL 32246
 (904) 642-0729

Monday: 10:30 a.m. to 1 p.m.**Wednesday:** noon to 4 p.m.**NASSAU COUNTY COUNCIL ON AGING**[\(www.nassaucountycoa.org/\)](http://www.nassaucountycoa.org/)**Fernandina Life Center**

1901 Island Walk Way
 Fernandina Beach, FL 32034
 (904) 261-0701
 Monday to Friday from 8 a.m. to 5 p.m.

Hilliard Life Center

37002 Ingham Road
 Hilliard, FL 32046
 (904) 845-3331
 Monday to Friday 8 a.m. to 5 p.m.

*Your new home is waiting...*

Start your search today and call a local,
 experienced, real estate agent you can trust.



Susan Froman
 REALTOR®

Cell: 904.635.9832
 Office: 904.285.1800
 Email: susanfroman@comcast.net

www.susanfroman.com

HUGHSTON
 CLINIC
 ORTHOPAEDICS

*Hughston's quality patient care has kept
 us #1 in orthopaedics for 70 years*



Jeffrey B. Burnette, MD
 Total Joint & Partial Joint
 Replacements, Hip & Knee

Mark T. Gould, MD
 Foot & Ankle, Sports Knee Injuries

JACKSONVILLE, FLORIDA

FLEMING ISLAND
 4689 Highway 17, Suite 11
 Fleming Island, FL 32003
 904-375-9753

SOUTHSIDE
 6699 Gate Parkway
 Jacksonville, FL 32256
 904-831-7562

www.hughston.com



eMDnow
HEALTHCARE ON-DEMAND

- Direct primary care
- Veteran services (including disability exams)
- Women services
- Telemedicine (online doctor services)
- Prescription refills
- Vaccinations



**ACCEPTING
NEW PATIENTS!**
No insurance
required!

Call Today!

800-511-0497



Ivorique Turner, DO
CEO/Medical Director
The Veteran's Doctor

Dr. Turner is a board-certified family medicine physician and 15-year U.S. Navy veteran with combat experience. Her clinical skills are well rounded and include aspects of pediatrics, internal medicine, and obstetrics/gynecology. She is excited to serve the residents of Jacksonville and her fellow veterans, delivering the quality healthcare they deserve. A physician with instilled core values of honor, courage, and commitment, Dr. Turner is prepared to work hard to exceed her patients' expectations of quality healthcare and exceptional customer service.

**NEW PATIENT
SPECIAL!**

Free registration for
new patients only.
Offer expires Dec. 31, 2019.

www.myemdnow.com

You may email for an appointment
or simply click on "make an
appointment" on any page.

**1106 A1A N Suite 100-A
Ponte Vedra Beach, FL 32082**
Conveniently located on A1A at
Mickler Road in Mickler's Landing
shopping plaza.



HOSPITALS

ST. JOHNS COUNTY

Flagler Health +

400 Health Park Blvd.
St. Augustine, FL 32086
(904) 819-5155

www.flaglerhospital.org

*Flagler Health Village at
Murabella opening July 2019;
Flagler Health Village at Nocatee
opening Summer 2020; Multi-
specialty clinic located in World
Golf Village

DUVAL COUNTY

Baptist Medical Center Beaches

1350 13th Ave. South
Jacksonville Beach, FL 32250
(904) 627-2900
www.baptistjax.com

Baptist Medical Center South

14550 Old St. Augustine Road
Jacksonville, FL 32258
(904) 271-6000
www.baptistjax.com

Baptist Medical Center Jacksonville

800 Prudential Drive
Jacksonville, FL 32207
(904) 202-2000
www.baptistjax.com

Baptist Heart Hospital

800 Prudential Drive
Jacksonville, FL 32207
(904) 202-2000
www.baptistjax.com

Wolfson Children's Hospital

800 Prudential Drive
Jacksonville, FL 32207
(904) 202-8000
www.wolfsonchildrens.com

Mayo Clinic Hospital

4500 San Pablo Road
Jacksonville, FL 32224
(904) 953-2000
www.mayoclinic.org

UF Health Jacksonville

655 West 8th St.
Jacksonville, FL 32209
(904) 244-0411
www.ufhealthjax.org

UF Health North

15255 Max Leggett Parkway
Jacksonville, FL 32218
(904) 244-0411
www.ufhealthjax.org

Memorial Hospital Jacksonville

3625 University Blvd. South
Jacksonville, FL 32216
(904) 702-6111
www.memorialhospitaljax.com

St. Vincent's Medical Center Riverside

1 Shircliff Way
Jacksonville, FL 32204
(904) 308-7300
www.jaxhealth.com

St. Vincent's Medical Center Southside

4201 Belfort Road
Jacksonville, FL 32216
(904) 296-3700
www.jaxhealth.com

NASSAU COUNTY

Baptist Medical Center Nassau

1250 South 18th St.
Fernandina Beach, FL 32034
(904) 321-3500
www.baptistjax.com

Congratulations Suzie Connolly!

Ranked in the Top 5 Best Agents by Jax Business
Journal. Suzie's Commitment to Excellence
and Comprehensive Knowledge of the Market
Makes Her a Natural Choice.

Suzie Connolly

904.234.8812 CELL

LUXURYREALESTATE.COM
WHO'S WHO IN LUXURY REAL ESTATE

**Buy with Confidence.
Sell with Success.
Invest with Results.**



Ponte Vedra Club Realty

TAKE ADVANTAGE OF OUR POWERFUL AFFILIATION WITH GATE HOSPITALITY.

Ask about Preferred Membership Initiation Fee Pricing for The Ponte Vedra Inn & Club, The Lodge & Club, Epping Forest Yacht & Country Club or The River Club available exclusively through Ponte Vedra Club Realty.

280 Ponte Vedra Boulevard | Ponte Vedra Beach, Florida 32082

scconnolly@pvclubrealty.com | www.pvclubrealty.com | www.homesbysuzieconnolly.com

PIVOT

Beyond Accounting CPAs

Welcome to Pivot CPAs. Beyond being a great place to work. Beyond being deeply involved in the community. Beyond all expectations. Whether it's tax, audit, assurance or solid business advice, we play a pivotal role for our clients.

TURN TO US

for help with all your tax needs

904.280.2053 | pivotcpas.com



RESCUE ME!

Making a Woof Connection LLC

Andrea Jaffe

Certified Dog Trainer

K9 Behavior Rehabilitation Specialist



- Animal Behavior College Certified-ABCDT45286
- Member IACP
- Cesar Milan's Training Fundamentals
- International School for Dog Trainers Ecollar Education
- Gary Wilkes Broadband Seminar
- Buck Brannaman Clinic
- Thumbtack Top Pro 2016-Present

Specializing in creating a well behaved family pet, by partnering with owners for better communication and foundations of calm clear leadership.

Because Good Dogs Go Everywhere!!!

Skinny JAX

Get skinny with it!

Customized Weight Loss Programs

Nutritional Programs for Healthy Eating and Weight Loss

Medical Grade Protein Supplements

Medical Grade Vitamins and Minerals

Metabolism Enhancers

B-12 Complex / Lipolean Injections

Phentermine/Adipex Prescriptions with Physician

Skin Tightening

Cellulite Reduction

Wrinkle Reduction



Locally owned & operated

SkinnyJax.com | 904-999-0977

1492 Third St. S · Jacksonville Beach, FL

Coastal Pet Services

Special care for God's special creatures

PET SITTING RX ADMINISTRATION
DOG WALKING PET GERIATRIC CARE
TAXI SERVICE SUB-Q & INJECTIONS
TRAINING ASSISTANCE MASSAGE THERAPY
SPECIALIZED PET GIFTS SPECIAL NEEDS CARE

FAMILY OWNED & OPERATED SINCE 2008

CALL AND FIND OUT WHY VETERINARIANS REFER US!

TERRI RODISH
904.631.7078

TERRI@COASTALPETSERVICES.COM
WWW.COASTALPETSERVICES.COM



ANIMAL SHELTERS

ST. JOHNS COUNTY

St. Johns County Animal Control Pet Center

130 North Stratton Road
St. Augustine, FL 32095
(904) 209-6190
www.co.st-johns.fl.us/animalcontrol/petcenter.aspx

S.A.F.E. Pet Rescue, Inc.

1250 County Road A1A South
St. Augustine, FL 32080
(904) 460-0556
www.safe-pet-rescue-fl.com

Ayla's Acres No-Kill Animal Rescue

www.aylasacres.org
142 King St.
(Thrift Shop location)
St. Augustine, FL 32084
(904) 484-8792

St. Augustine Humane Society

1665 Old Moultrie Road
St. Augustine, FL 32084
(904) 829-2737
www.staughumane.org



You want your family to live their very best life.
So do we.

Pediatrician **Victoria Array, MD**, and family practitioner **Katherine McMullan, MD**, care for your whole family, from infants to senior adults.

In addition to primary care services, UF Health specialists provide gynecology, mental health and urology services.

Patients also have access to MyUFHealth, a secure web portal that allows them to communicate with their providers, schedule appointments, request prescription refills, view test results and more.



Victoria Array, MD



Katherine McMullan, MD

Hours: Monday – Friday, 8 a.m. – 5 p.m.
For appointments, call 904.383.1053.

UFHealthJax.org/nocatee

UF HEALTH FAMILY MEDICINE AND PEDIATRICS – NOCATEE

203 Fort Wade Road, Suite 200
Ponte Vedra, FL 32081

UFHealth
UNIVERSITY OF FLORIDA HEALTH



DUVAL COUNTY

Jacksonville Animal Care and Protective Services

2020 Forest St.
Jacksonville, FL 32204
(904) 630-2489
www.coj.net/departments/neighborhoods/animal-care-protective-services

Jacksonville Beach Animal Control

1460 Shetter Ave.
Jacksonville Beach, FL 32250
(904) 247-6167
www.jacksonvillebeach.org/government/departments/police/animal-control

Jacksonville Humane Society

8464 Beach Blvd.
Jacksonville, FL 32216
(904) 725-8766
www.jaxhumane.org

Florida Urgent Rescue

7643 Gate Parkway, Suite 104-27
Jacksonville, FL 32256
(904) 372-3930
www.floridaurgentrescue.com



NASSAU COUNTY

Nassau County Animal Services

86078 License Road
Fernandina Beach, FL 32034
(904) 530-6150
www.nassaucountyfl.com/845/animal-services

Nassau Humane Society

639 Airport Road
Fernandina Beach, FL 32034
(904) 321-1647
www.nassauhumanesociety.com

Come and SEA what we're all about!



New exhibits & shark experiences!

- Snorkel Adventure
- Seahorse Exhibit
- Coral reef habitat with over 200 Florida reef fish and rays
- Shark & Ray Cove
- Feed the sharks & rays
- Educational presentations
- Shark tooth dig: Find shark teeth, ID them and take your favorite one home

GIVE US A CALL FOR INFORMATION ON BIRTHDAY PARTIES, FIELD TRIPS & SUMMER CAMPS!



Open Tues-Sun: 10am-5pm (Closed Mon)
Memorial Day to Labor Day - open 7 days a week
(904) 429-9777 • www.saaquarium.com
2045 S.R. 16 • St. Augustine, FL 32084

COMING SOON

PONTE VEDRA BEACH, FALL 2019



WHERE THE DOGS COME, SIT + PLAY



DOG DAYCARE. BOARDING. TRAINING

www.Sawgrasspetresort.com

Find Us #32082DOGLIFE

info@Sawgrasspetresort.com

Email for updates & ask us about our Founding Member's package.



Photo by Micah Green

EVENTS

THE PLAYERS Championshipwww.theplayers.com**March 10-15, 2020, TPC Sawgrass in Ponte Vedra Beach**

THE PLAYERS Championship is an annual golf tournament on the PGA TOUR based in Ponte Vedra Beach. TPC Sawgrass hosts the tournament on its Stadium Course, bringing thousands of spectators to the area for the tournament and many surrounding events. TPC Sawgrass is known for its 17th hole's "Island Green," one of the most recognizable and difficult holes in golf. The tournament is considered the "fifth major" of the major championships.

Gate River Runwww.1stplacesports.com/grr_index.html**March 2020 (exact date TBD), Downtown Jacksonville**

More than 20,000 runners and walkers participate in the Gate River Run. In addition to the 15K, the River Run weekend features The Florida Times-Union 5K for Charity, the Junior River Run and the Brooks Rehabilitation Challenge Mile, as well as an expo.

Greater Jacksonville Kingfish Tournamentwww.kingfishtournament.com**July 15-20, 2019, Sisters Creek Marina in Jacksonville**

The Greater Jacksonville Kingfish Tournament has been held since 1981. Professional and amateur anglers compete for cash and prizes, and the tournament attracts thousands of spectators. It also features a junior angler tournament for anglers under the age of 16.

Jacksonville Marine Charities utilizes proceeds from the tournament to support marine science research, preservation and education.

Florida/Georgia gamewww.flgajax.com**October 2019 (exact date TBD), TIAA Bank Field**

Known as the "World's Largest Outdoor Cocktail Party," the college football game between the University of Florida and the University of Georgia is played on "neutral territory" in Jacksonville and is one of the most prominent college football rivalries. The "home" team alternates each year, and ticket distribution is split evenly between each team. Many events and activities surround the game itself.

TaxSlayer Gator Bowlwww.taxslayergatorbowl.com**December 2019 or January 2020 (exact date TBD), TIAA Bank Field**

The Gator Bowl is an annual college football bowl game played in Jacksonville since 1946, with the exception of the 1994 game, which was played in Gainesville because of stadium renovations. Many events surround the bowl game, which generally takes place on New Year's Eve or New Year's Day.



TEAMS

Photo courtesy of the Jacksonville Jaguars



Photo by Paris Moulden



Photo courtesy of the Jacksonville Icemen

Jacksonville Jaguars

Team mascot: Jaxson de Ville

Team colors: Black, gold, teal and white

Where to catch the action:

TIAA Bank Field

1 TIAA Bank Field Drive

Jacksonville, FL 32202

Tickets: www.jaguars.com/tickets

About: The Jacksonville Jaguars are a professional football team owned by Shad Khan and coached by Doug Marrone. The team plays in the National Football League's (NFL) AFC South, along with the Indianapolis Colts, Tennessee Titans and Houston Texans. Since the Jaguars joined the NFL in 1995 as an expansion team, the team has won division championships in 1998, 1999 and 2017, and has made the playoffs seven times.

Jacksonville Jumbo Shrimp

Team mascot: Southpaw and Scamp

Team colors: Red, white and blue

Where to catch the action:

Baseball Grounds of Jacksonville

301 A. Philip Randolph Blvd.

Jacksonville, FL 32202

Tickets: www.jaxshrimp.com

About: A minor league baseball team, the Jacksonville Jumbo Shrimp are the Double-A affiliate of the Miami Marlins Major League Baseball (MLB) team. The team is owned by Ken Babby and managed by Kevin Randel, with Harold Crow serving as the club's general manager. The Jumbo Shrimp were formerly known as the Suns and Expos.

Jacksonville Sharks

Mascot: Chum

Team colors: Red, black and white

Where to catch the action:

Vystar Veterans Memorial Arena

300 A. Philip Randolph Blvd.

Jacksonville, FL 32202

Tickets: (904) 621-0700; www.jaxsharks.com

About: The Jacksonville Sharks are a professional indoor football team in the National Arena League (NAL). The team won the NAL Championship in 2017, its first year in the league, and was previously a member of the Arena Football League (AFL). The team is owned by Steve Curran, Diva Nagula, Kevin Wezniak, Rob Storm, Nick Furriss and Jason Green and coached by Siaha Burley.

Jacksonville Icemen

Mascot: Fang

Team colors: Navy blue, Columbia blue, white

Where to catch the action:

Vystar Veterans Memorial Arena

300 A. Philip Randolph Blvd.

Jacksonville, FL 32202

Tickets: www.jacksonvilleicemen.com/en/tickets

About: The Jacksonville Icemen are a minor league hockey team that plays in the East Coast Hockey League (ECHL). The team, previously the Evansville (Illinois) Icemen, relocated to Jacksonville in January 2017. The Icemen made it to the South Division semifinals of the ECHL playoffs in the 2018-19 season, their second in Jacksonville. The team is coached by former Canadian pro hockey player Jason Christie, the winningest head coach in ECHL history.

Jacksonville Giants

Team mascot: Mr. Biggs

Team colors:

Orange and Navy Blue

Where to catch the action:

• Vystar Veterans Memorial Arena-
300 A. Philip Randolph Blvd.,
Jacksonville, FL 32202

• UNF Arena - 11852 University of
North Florida Drive, Jacksonville,
FL 32224

• Edward Waters College- 1658
Kings Road, Jacksonville, FL 32209

Tickets:

www.jacksonvillegiants.com/giants

About: The Jacksonville Giants are a professional minor league basketball team that made their debut in 2010. The Giants are six-time American Basketball Association (ABA) National Champions, winning the title in 2012, 2013, 2016, 2017, 2018 and 2019. The team is owned by Ron Sholes and coached by Jerry Williams.

Jacksonville Axemen

Team Colors:

Red, white and blue

Where to catch the action:

Hodges Stadium

1 UNF Drive

Jacksonville, FL 32224

Tickets: www.eventbrite.com/o/jacksonville-axemen-rugby-league-4504372427

About: The Jacksonville Axemen are a semi-professional rugby league team that plays in the USA Rugby League (USARL). The Axemen were founded in 2006 by Daryl Howland and General Manager Drew Slover as an expansion team of the American National Rugby League (AMNRL). They were one of seven teams to depart the AMNRL to form the new USARL, which began in the summer of 2011. The Axemen won National Championships in 2012 and 2018 in the USARL.

Jacksonville Roller Derby

Where to catch the action:

Skate Station Funworks

Mandarin

3461 Kori Road

Jacksonville, FL 32257

Tickets:

www.jacksonvillerollerderby.com/tickets

About: Founded in March 2006, the Jacksonville Roller Derby (JRD) are Jacksonville's first and only all-female flat-track roller derby league. Comprised of more than 70 skaters, the JRD are dispersed among six teams that compete on differing skill levels. Home teams consist of the Duval Derby Dames, First Coast Fatales and the Bold City Bombshells. Travel teams are the J-Villains, River City Rat Pack and the New Jax City Rollers. JRG were accepted into the Women's Flat Track Derby Association (WFTDA) in December 2010.



ON TARGET SPORTS

**NE Florida's
Premier Firearms
Dealer & Indoor
Shooting Range**

OPEN 7 DAYS A WEEK

- ★ Firearm Sales
- ★ Climate Controlled Range
- ★ Shoot Handguns and Rifles
- ★ Gun Rentals including Machine Guns
- ★ Training & Classes



www.OTStrange.com
Wells Road, Orange Park (next to General RV) 904-301-0700



Photo courtesy of Visit Jacksonville



Photo courtesy of Visit Jacksonville



Photo courtesy of GTM Research Reserve

ST. JOHNS COUNTY

- www.co.st-johns.fl.us/Recreation/Parks/index.aspx

NASSAU COUNTY

- www.nassaucountyfl.com/267/Parks-Recreation-Department

DUVAL COUNTY

- www.coj.net/departments/parks-and-recreation/recreation-and-community-programming.aspx

For a complete list of state parks, visit www.floridastateparks.org.

Here's information on a few of the most popular parks and conservation areas on the First Coast.

Anastasia State Park

300 Anastasia Park Road
St. Augustine, FL 32080
(904) 461-2033

www.floridastateparks.org/anastasia

Hours: 8 a.m. to sundown, 365 days per year.

Cost: The park fees are as follows: \$8 per vehicle (limit of two to eight people per vehicle); \$4 per single-occupant vehicle; and \$2 per pedestrian, bicyclist, extra passenger or passenger in vehicle with holder of Annual Individual Entrance Pass. There is also a camping fee of \$28 per night, plus a non-refundable reservation fee of \$6.70.

About: Anastasia State Park is comprised of 1,600 acres of rich ecosystems and abundant wildlife, including 4 miles of beach. Park attractions include a self-guided nature trail that winds through the maritime hammock and onto ancient sand dunes, and a coquina quarry archeological site where coquina rock was mined to help construct the nearby Castillo de San Marcos national monument. Other park activities include bicycling, camping, geo-seeking and beachcombing.

GTM Research Reserve

505 Guana River Road
Ponte Vedra Beach, FL 32082
(904) 823-4500

www.gtmnerr.org

Hours: GTM trails and Guana Beach parking areas open daily from 8 a.m. to sunset. Guana Dam open daily for fishing from 4 a.m. to 11 p.m. Visitor Center open 9 a.m. to 4 p.m. Tuesday through Saturday.

Cost: \$3 per vehicle up to eight people and \$1 per pedestrian, bicyclist or extra passenger on trails and in beach parking and dam area.

About: The Guana Tolomato Matanzas National Estuarine Research Reserve is a collaboration between Florida's Department of Environmental Protection and the National Oceanic and Atmospheric Administration. It covers 74,000 acres of coastal lands in Northeast Florida from Ponte Vedra Beach to Palm Coast. Recreational activities at GTM Research Reserve include hiking, biking, horseback riding, fishing, kayaking or canoeing, bird-watching, picnicking, sunbathing and much more.

Kathryn Abbey Hanna Park

500 Wonderwood Drive
Jacksonville, FL 32233
(904) 249-4700

www.coj.net/departments/parks,-recreation-and-community-services/recreation-and-community-programming/kathryn-abbey-hanna-park.aspx

Hours: Open to the public from 8 a.m. to 8 p.m. April to October and 8 a.m. to 6 p.m. November to March. Early bird passes and annual passes are required for entry from 6 to 8 a.m.

Cost: Park fees are as follows: \$3 per pedestrian and bicyclist 8 a.m. to close; \$5 per car (up to six people) 8 a.m. to close; and \$50 per bus. Camping and RVs are allowed for additional costs, and cabins can be rented. Annual passes are \$99.

About: In addition to beach access, the park includes a 60-acre lake for fishing, kayaking, pedal boat and canoe, biking and hiking trails, picnic areas and a kids splash park.

Huguenot Memorial Park

10980 Heckscher Drive
Jacksonville, FL 32226
(904) 255-4255

<http://www.coj.net/departments/parks,-recreation-and-community-services/recreation-and-community-programming/huguenot-memorial-park.aspx>

Hours: Open to the public from 6 a.m. to 7 p.m. every day from March 11 to Nov. 4, and from 6 a.m. to 6 p.m. from Nov. 5 to March 10.

Cost: Park fees are as follows: \$3 per pedestrian or bicyclist from 6 a.m. to close; \$5 per vehicle (up to six people) plus \$1 per each additional person from 6 a.m. to close; and \$50 per bus. Annual passes are \$99.

About: Huguenot Memorial Park offers camping, a nature center with interactive display and reference books, and a bird observation area. The park is part of the Great Florida Birding Trail, and a portion of the park is designated as critical wildlife area for nesting terns and shorebirds.

Little Talbot Island State Park

12157 Heckscher Drive
Jacksonville, FL 32226
(904) 251-2320

www.floridastateparks.org/parks-and-trails/little-talbot-island-state-park

Hours: Open from 8 a.m. to sundown, 365 days per year.

Park fees are as follows: \$5 per vehicle (limit of two to eight people per vehicle); \$4 per single occupant vehicle; \$2 per pedestrian, bicyclist, extra passenger and passenger in vehicle with holder of Annual Individual Entrance Pass. Camping is allowed for an additional fee.

About: One of the few remaining undeveloped barrier islands in Northeast Florida, Little Talbot Island State Park boasts more than 5 miles of white sandy beaches and 3 miles of bike trails. Beachside picnic pavilions are available to reserve. A campground is located along the eastern salt marshes of Myrtle Creek.



Amelia Island Kayak Excursions
Guana Reserve Tours
"Where Kayaking Fun Begins"

- Popular 2-Hour Guided Tours • Okefenokee Refuge
- Cumberland Island National Seashore
- Lofton & Egan's Creeks • Amelia River & Fort Clinch
- Fun Professional Guides • Free Digital Photos

CALL TODAY! 904-557-5307

#1 on TripAdvisor - Award Winning - Family Owned/Operated
www.ameliaislandkayak.com



PHILIP W. VINEYARD, ESQ.
ATTORNEY AT LAW

VINEYARD LEGAL SERVICES

Litigator, Mediator, or Arbitrator for the following:

- Professional Malpractice
- Labor & Employment
- Construction and Design Defect
- Personal Injury/Wrongful Death
- Business Disputes
- Insurance Coverage

904.329.7232 • philip@vamsjax.com
VINEYARDATTORNEYS.COM



Photo courtesy of Visit Jacksonville



Photo courtesy of Visit Jacksonville

Jacksonville Arboretum & Gardens

1445 Millcoe Road
Jacksonville, FL 32225
(904) 318-4342

www.jacksonvillearboretum.org

Hours: Open to the public seven days a week from 8 a.m. to 5 p.m. with extended hours on certain days and times of the year.

Cost: Except for special events, there is no admission fee. A \$3 non-member visitor donation is requested to help pay for operations.

About: Come learn about North Florida wildlife habitats first-hand at the Jacksonville Arboretum & Gardens. This 120-acre urban woodland includes a 2-acre lake and several trails that wind their way through the park. The arboretum also hosts special events, programs and activities such as plein air painting and hikes. In addition, yoga is another popular activity there.

Pumpkin Hill Creek Preserve State Park

13802 Pumpkin Hill Road
Jacksonville, FL 32226
(904) 696-5980

www.floridastateparks.org/parks-and-trails/pumpkin-hill-creek-preserve-state-park

No entrance fee.

About: Pumpkin Hill Creek Preserve State Park protects one of the largest continuous areas of coastal uplands remaining in Jacksonville. The park features over 15 miles of multi-use trails accessible to equestrians, hikers and off-road bicyclists who may be lucky enough to spot some of the park's abundant wildlife, such as the American alligator or the endangered wood stork. The park also offers a canoe and kayak launch.

le macaron

french pastries

Macarons • Coffee • Fine Chocolates • Gelato



Jacksonville

Avenues Mall
Avondale
St. John's Town Center

Ponte Vedra Beach

The Shoppes at
Ponte Vedra

Savannah

Broughton Street
Collection

Give Your Home a New Look

Designs and Styles for Every Room in the House



GREAT WINDOW SHADES

BLINDS | SHADES | SHUTTERS

Lifetime
Warranty
Made in the
USA

We beat BIG BOX PRICING...

Guaranteed!

25% OFF
any product we offer.

Expires 12/31/19

We Also Do Draperies!

904-361-2010

gwshades.com

6950 Philips Hwy., Ste 8
Locally owned and operated since 2005

Big Talbot Island State Park

12157 Heckscher Drive

Jacksonville, FL 32226 (will bring visitors to ranger station at Little Talbot Island State Park)

(904) 251-2320

www.floridastateparks.org/parks-and-trails/big-talbot-island-state-park

Hours: Open from 8 a.m. to sundown, 365 days per year/Boat ramp open 24 hours a day.

Cost: Park fees are as follows: \$2 per person to access the George Crady Bridge Fishing Pier; \$3 per vehicle entrance fee to access the Bluffs picnic area, Blackrock trailhead and Big Pine trailhead; and \$4 to use the boat launch.

About: Big Talbot Island State Park's primary activities include nature study and bird watching. Another popular park activity is photography on Boneyard Beach, whose namesake is derived from the live oak and cedar tree "skeletons" that once grew near the shore. Picnic pavilions located at the Bluffs overlook the water. Explore the diverse island habitats by hiking Blackrock Trail to the shoreline, Big Pine Trail to the marsh or Old Kings Highway and Jones Cut through the maritime forest.

Amelia Island State Park

12157 Heckscher Drive

Jacksonville, FL 32226 (will bring visitors to ranger station at Little Talbot Island State Park)

(904) 251-2320

www.floridastateparks.org/parks-and-trails/amelia-island-state-park

Hours: Open from 8 a.m. to sundown, 365 days per year.

Cost: \$2 per person.

About: An easy drive from Jacksonville or Fernandina Beach, Amelia Island State Park protects over 200 acres of unspoiled wilderness along the southern tip of Amelia Island. Park activities include bicycling, fishing, canoeing, kayaking and a horse/equestrian trail. Amelia Island State Park is one of the few locations on the East Coast that offers horseback riding on the beach and riding tours along the shoreline.



Tim's Wine Market operates on a very simple model:

PROVIDE SERVICE, SELECTION AND VALUE

This old fashioned, customer oriented attitude has allowed us to be the number one choice for Florida Wine drinkers that want the unbiased opinions of a local expert.



278 Solana Rd
Ponte Vedra, FL 32082

904-686-1741

Owners

Jean & Emery Clance

We offer service, selection and value as your local wine shop

- Wine selections available in all price ranges
- Complimentary wine tastings each weekend
- Unique wines for corporate gifts, parties, and wedding receptions

Tuesday – Friday: 10 am – 7 pm

Saturday: 10 am – 5 pm

Closed Sunday and Monday

Want to become part of our weekly email list?

Email: mjc@timswine.com

www.timswine.com



Photo courtesy of Amelia Island



Photo courtesy of National Park Service



Photo courtesy of National Park Service

ST. JOHNS COUNTY

Castillo de San Marcos

11 South Castillo Drive
Saint Augustine, FL 32084
(904) 829-6506, x227

www.nps.gov/casa/index.htm

Hours: Monday to Sunday from 9 a.m. to 5 p.m.

Adults (ages 16 and older): \$15
Children ages 15 and under: Free

About: Constructed to protect Spain's settlement in St. Augustine, this national monument features an impressive coquina fortification. The fort stands as a monument to Spain's 300-year occupation of Florida. It is the oldest surviving masonry fortress in the United States, having never been captured by the pirates, hostile American Indians or neighboring imperial powers.

Cathedral Basilica of St. Augustine

38 Cathedral Place
St. Augustine, FL 32084
(904) 824-2806

www.dosafl.com/parish/cathedral-basilica-of-st-augustine
Tours available.

About: The parish of St. Augustine was established in 1594 and is the oldest parish in the United States. The present Cathedral of St. Augustine, a National Historic Landmark, was constructed in 1797 in the Spanish Mission style.

Fort Matanzas

8635 A1A South
Saint Augustine, FL 32080
(904) 471-0116

www.nps.gov/foma/index.htm

Hours: Monday to Sunday from 9 a.m. to 5:30 p.m.

No fee.

About: The Fort Matanzas National Monument is located along the Matanzas River and consists of a 1740s Spanish fort, salt marsh and barrier islands. It was built to protect St. Augustine from British attack. Visitors can tour the fort or view the many reenactments and living history demonstrations offered.

Fort Mose Historic State Park

15 Fort Mose Trail
St. Augustine FL 32084
(904) 823-2232

www.floridastateparks.org/parks-and-trails/fort-mose-historic-state-park

Hours: Monday to Sunday from 9 a.m. to 5 p.m.

No fee

About: Those inclined towards history will enjoy the interactive museum that tells the complete story of the first legally sanctioned free African settlement in what would become the United States. Although there are no remains of the earth and wooden structures, visitors can still view the land where the settlement once stood. In addition to the museum, the park offers picnic areas, observation and birding boardwalk, kayak launch boardwalk and a visitor center.

Old Jail

167 San Marco Ave.
St. Augustine, FL 32084
(844) 388-6452

www.trolleytours.com/st-augustine/old-jail

Hours: Open daily 9 a.m. to 4:30 p.m.

Adults: \$12.45

Children ages 6-12: \$6.70

Children under 6: Free

About: Built by Henry Flagler in 1891 and placed on the National Registry of Historic Places in 1987, the Jail was operational for more than 60 years and housed 72 prisoners at a time.

Ponce de Leon's Fountain of Youth

11 Magnolia Ave.
St. Augustine, FL 32084
(904) 829-3168

www.fountainofyouthflorida.com

Hours: 9 a.m. to 6 p.m. daily

Adults: \$18

Seniors (60 and up): \$17

Children ages 6-12: \$10

Children ages 5 and under: Free

Discounts available for St. Johns County residents

About: The Fountain of Youth Archeological Park is the site of the first Spanish settlement in the new world. This expansive park showcases what 16th-century Spanish settlements may have been like. Visitors can learn about native Timucuan and interact with the many historical reenactors while sampling the waters from the natural spring.



Photo courtesy of Visit Jacksonville



Photo courtesy of National Park Service

DUVAL COUNTY

Veterans Memorial Wall

1145 East Adams St.

Jacksonville, FL 32202

About: Adjacent to TIAA Bank Field in Downtown Jacksonville, the Veterans Memorial Wall serves to honor more than 1,700 local area American war heroes. Built in 1995, the memorial is the second largest veterans memorial wall in the United States.

Timucuan Ecological and Historic Preserve

12713 Fort Caroline Road

Jacksonville, FL 32225

(904) 641-7155

www.nps.gov/timu/index.htm

Hours: Open Monday to Sunday from 9 a.m. to 5 p.m.

About: A U.S. National Preserve, the Timucuan Ecological and Historic Preserve comprises 46,000 acres of wetlands, waterways and habitats in Jacksonville. Visitors can learn about salt marshes, coastal dunes and hardwood hammocks native to the area. The Preserve also includes Fort Caroline and Kingsley Plantation, which teach visitors about the history of slavery and early colonies.

Treaty Oak

1123 Prudential Drive

Jacksonville, FL 32207

About: Known for its octopus-like appearance, Treaty Oak is a Southern live oak that is estimated to be more than two centuries old. Located in Jessie Ball duPont Park, the tree's impressive structure has become a touchstone of the community.

NASSAU COUNTY

Amelia Island Lighthouse

215 O'Hagan Lane

Fernandina Beach, FL 32034

(904) 310-3350

www.fbfl.us/474/Amelia-Island-Lighthouse-Tour

Hours: Tours offered first and third Wednesdays of each month.

Adults: \$5

Children under 12: \$3

About: Touting itself as the "oldest existing lighthouse in the state of Florida," the Amelia Island Lighthouse was built in 1838. Visitors can explore both the lighthouse and grounds, which are located at the highest point on the island. The lighthouse is still operational, so visitors can tour the interior and see how lighthouses function.

Fort Clinch

2601 Atlantic Ave.

Fernandina Beach, FL 32034

(904) 277-7274

www.floridastateparks.org/fortclinch

Hours: Open daily from 9 a.m. to 5 p.m.

Cost: \$6 per vehicle into park (limit two to eight people); \$4 per single occupant vehicle; \$2 per pedestrian, bicyclist, extra passenger or passenger in vehicle with holder of Annual Individual Entrance Pass; \$2.50 per person for Fort admission.

About: Located in the 1,400-acre state park, the Civil War era Fort sits along the St. Marys River. The coastal fortification was built as part of the Third System of seacoast defense to protect the river and Cumberland Sound. Visitors can explore the fort's many rooms, living history programs and learn about life as a Union soldier.



Photo courtesy of Amon Focus



Photo courtesy of Amon Focus



Photo courtesy of Amelia Island

Fort George Island Cultural State Park

11241 Fort George Road
 Jacksonville FL 32226
 904-251-2320

www.floridastateparks.org/parks-and-trails/fort-george-island-cultural-state-park

Hours: Open every day 8 a.m. to sundown; The Ribault Club open Wednesday to Sunday 9 a.m. to 5 p.m.

No fee required.

About: A site of human occupation for over 5,000 years, Fort George Island was named for a 1736 fort built to defend the Ribault Club southern flank of Georgia when it was a colony. Today's visitors come for boating, fishing, off-road bicycling and hiking. Once an exclusive resort, it is now a visitor center with a meeting space available for special functions. Behind the club, small boats, canoes and kayaks can be launched on the tidal waters.

ULLMANN DESIGN

Ullmann Design creates design solutions that infuse natural inspirations into beautiful interiors.

- Ponte Vedra Beach resident & Principle Interior Designer
- **LISA ULLMAN**
(904) 534-4920

www.ullmandesign.com

Enjoy the SEASON of SPECTACULAR

With a new menu created for each show, The Alhambra Theatre & Dining is the perfect night out. Join us as fun takes center stage.

Alhambra theatre & dining

ALHAMBRA THEATRE 2019 SEASON SCHEDULE

ON STAGE 'TIL JUNE 9

JUNE 12 - JULY 28

AUG. 7 - SEPT. 15

SEPT. 18 - OCT. 13

OCT. 23 - NOV. 24

For current show schedule visit alhambrajax.com
GET YOUR TICKETS! CALL 904-641-1212

ST. JOHNS COUNTY PUBLIC LIBRARY BRANCHES

www.sjcpls.org

Anastasia Island Branch

124 Seagrove Main St.
St. Augustine Beach, FL 32080
(904) 209-3730

Tuesday, Thursday:

10 a.m. to 8 p.m.

Wednesday, Friday:

10 a.m. to 6 p.m.

Saturday: 10 a.m. to 5 p.m.

Sunday, Monday: Closed

Bartram Trail Branch

60 Davis Pond Blvd.
Fruit Cove, FL 32259
(904) 827-6960

Monday: 10 a.m. to 6 p.m.

Tuesday: Noon to 8 p.m.

Wednesday, Thursday, Friday:

10 a.m. to 6 p.m.

Saturday: 10 a.m. to 5 p.m.

Sunday: Closed

**Branch temporarily closed through
September 2019*

Hastings Branch

6195 South Main St.
Hastings, FL 32145
(904) 827-6970

Tuesday, Thursday:

10 a.m. to 7 p.m.

Wednesday, Friday:

10 a.m. to 6 p.m.

Saturday: 10 a.m. to 3 p.m.

Sunday, Monday: Closed

Main Branch

1960 N. Ponce De Leon Blvd.
St. Augustine, FL 32084
(904) 827-6940

Monday, Tuesday: 11 a.m. to 7 p.m.

Wednesday, Thursday, Friday:

10 a.m. to 6 p.m.

Saturday: 10 a.m. to 5 p.m.

Sunday: Closed

Ponte Vedra Beach Branch

101 Library Blvd.
Ponte Vedra Beach, FL 32082
(904) 827-6950

Monday, Tuesday, Wednesday:

10 a.m. to 8 p.m.

Thursday, Friday: 10 a.m. to 6 p.m.

Saturday: 10 a.m. to 5 p.m.

Sunday: Closed

Southeast Branch

6670 US 1 South
St. Augustine, FL 32086
(904) 827-6900

Monday, Tuesday, Thursday:

10 a.m. to 8 p.m.

Wednesday, Friday: 10 a.m. to 6 p.m.

Saturday: 10 a.m. to 5 p.m.

Sunday: Closed

DUVAL COUNTY PUBLIC LIBRARY BRANCHES

jpl.coj.net

Main Library

303 North Laura St.
Jacksonville, FL 32202
(904) 630-2665

Monday: 10 a.m. to 6 p.m.

Tuesday, Wednesday: 11 a.m. to 7 p.m.

Thursday, Friday, Saturday: 10 a.m. to 6 p.m.

Sunday: 1 p.m. to 5 p.m.

Argyle Branch

7973 Old Middleburg Road South
Jacksonville, FL 32222
(904) 573-3164

Monday, Tuesday: Noon to 8 p.m.

Wednesday, Thursday, Friday, Saturday:

10 a.m. to 6 p.m.

Sunday: Closed

Beaches Branch

600 Third St.
Neptune Beach, FL 32266
(904) 241-1141

Monday, Tuesday: Noon to 8 p.m.

Wednesday, Thursday, Friday, Saturday:

10 a.m. to 6 p.m.

Sunday: Closed

Bradham and Brooks Branch

1755 Edgewood Ave. West
Jacksonville, FL 32208
(904) 765-5402

Monday, Tuesday: Noon to 8 p.m.

Wednesday, Thursday, Friday,

Saturday: 10 a.m. to 6 p.m.

Sunday: Closed

Brentwood Branch

3725 Pearl St.
Jacksonville, FL 32206
(904) 630-0924

Monday, Tuesday: Noon to 8 p.m.

Wednesday, Thursday, Friday,

Saturday: 10 a.m. to 6 p.m.

Sunday: Closed

Bill Brinton Murray Hill Branch

918 Edgewood Ave. South
Jacksonville, FL 32205
(904) 384-2665

Monday, Tuesday: Noon to 8 p.m.

Wednesday, Thursday, Friday,

Saturday: 10 a.m. to 6 p.m.

Sunday: Closed

Brown Eastside Branch

1390 Harrison St.
Jacksonville, FL 32206
(904) 630-5466

Monday, Tuesday: Noon to 8 p.m.

Wednesday, Thursday, Friday,

Saturday: 10 a.m. to 6 p.m.

Sunday: Closed

Dallas Graham Branch

2304 Myrtle Ave. North
Jacksonville, FL 32209
(904) 630-0922

Monday, Tuesday: Noon to 8 p.m.

Wednesday, Thursday, Friday,

Saturday: 10 a.m. to 6 p.m.

Sunday: Closed

Highlands Regional Branch

1826 Dunn Ave.
Jacksonville, FL 32218
(904) 757-7702

Monday, Tuesday, Wednesday,

Thursday: 10 a.m. to 9 p.m.

Friday, Saturday: 10 a.m. to 6 p.m.

Sunday: 1 p.m. to 5 p.m.

NASSAU COUNTY LIBRARIES

nassaureads.com

Mandarin Branch

3330 Kori Road
Jacksonville, FL 32257
(904) 262-5201

Monday, Tuesday: Noon to 8 p.m.
Wednesday, Thursday, Friday,
Saturday: 10 a.m. to 6 p.m.
Sunday: Closed

Maxville Branch

8375 Maxville Blvd.
Jacksonville, FL 32234
(904) 289-7563

Monday, Tuesday: Noon to 8 p.m.
Wednesday, Thursday, Friday,
Saturday: 10 a.m. to 6 p.m.
Sunday: Closed

Pablo Creek Regional

13295 Beach Blvd.
Jacksonville, FL 32246
(904) 992-7101

Monday, Tuesday, Wednesday,
Thursday: 10 a.m. to 9 p.m.
Friday, Saturday: 10 a.m. to 6 p.m.
Sunday: 1 p.m. to 5 p.m.

Regency Square Branch

9900 Regency Square Blvd.
Jacksonville, FL 32225
(904) 726-5142

Monday, Tuesday: Noon to 8 p.m.
Wednesday, Thursday, Friday,
Saturday: 10 a.m. to 6 p.m.
Sunday: Closed

San Marco Branch

1513 LaSalle St.
Jacksonville, FL 32207
(904) 858-2907

Monday, Tuesday: Noon to 8 p.m.
Wednesday, Thursday, Friday,
Saturday: 10 a.m. to 6 p.m.
Sunday: Closed

South Mandarin Branch

12125 San Jose Blvd.
Jacksonville, FL 32223
(904) 288-6385

Monday, Tuesday: Noon to 8 p.m.
Wednesday, Thursday, Friday,
Saturday: 10 a.m. to 6 p.m.
Sunday: Closed

Southeast Regional

10599 Deerwood Park Blvd.
Jacksonville, FL 32256
(904) 996-0325

Monday, Tuesday, Wednesday,
Thursday: 10 a.m. to 9 p.m.
Friday, Saturday: 10 a.m. to 6 p.m.
Sunday: 1 p.m. to 5 p.m.

University Park Branch

3435 University Blvd. N.
Jacksonville, FL 32277
(904) 630-1265

Monday, Tuesday: Noon to 8 p.m.
Wednesday, Thursday, Friday,
Saturday: 10 a.m. to 6 p.m.
Sunday: Closed

Charles Webb Wesconnett Regional

6887 103rd St.
Jacksonville, FL 32210
(904) 778-7305

Monday, Tuesday, Wednesday,
Thursday: 10 a.m. to 9 p.m.
Friday, Saturday: 10 a.m. to 6 p.m.
Sunday: 1 p.m. to 5 p.m.

West Branch

1425 Chaffee Road South
Jacksonville, FL 32221
(904) 693-1448

Monday, Tuesday: Noon to 8 p.m.
Wednesday, Thursday, Friday,
Saturday: 10 a.m. to 6 p.m.
Sunday: Closed

Westbrook Branch

2809 Commonwealth Ave.
Jacksonville, FL 32254
(904) 384-7424

Monday, Tuesday: Noon to 8 p.m.
Wednesday, Thursday, Friday,
Saturday: 10 a.m. to 6 p.m.
Sunday: Closed

Willowbranch Branch

2875 Park St.
Jacksonville, FL 32205
(904) 381-8490

Monday, Tuesday: Noon to 8 p.m.
Wednesday, Thursday, Friday,
Saturday: 10 a.m. to 6 p.m.
Sunday: Closed

Bryceville Branch

7280 Motes Road
Bryceville, FL 32009
(904) 530-6500

Tuesday, Wednesday, Saturday:
10 a.m. to 6 p.m. (closed from
12:30 p.m. to 1 p.m.)
Thursday: Noon to 8 p.m.
Monday, Friday, Sunday: Closed

Callahan Branch

450077 State Road 200
Suite 15
Callahan, FL 32011
(904) 530-6500

Monday, Wednesday, Thursday,
Friday: 10 a.m. to 6 p.m.
Tuesday: Noon to 8 p.m.
Saturday, Sunday: Closed

Fernandina Beach Branch

25 North Fourth St.
Fernandina Beach, FL 32034
(904) 530-6500, Option 1

Monday, Thursday:
10 a.m. to 8 p.m.
Tuesday, Wednesday, Friday,
Saturday: 10 a.m. to 6 p.m.
Sunday: Closed

Hilliard Branch

15821 County Road 108
Hilliard, FL 32046
(904) 530-6500

Monday, Tuesday, Wednesday,
Friday: 10 a.m. to 6 p.m.
Thursday: Noon to 8 p.m.
Saturday, Sunday: Closed

Yulee Branch

FSCJ Campus
76346 William Burgess Blvd.
Yulee, FL 32097
(904) 530-6500

Monday, Tuesday, Wednesday,
Thursday: 8 a.m. to 6 p.m.
Friday: 8 a.m. to noon
Saturday, Sunday: Closed

ST. JOHNS COUNTY



Photo courtesy of Lightner Museum

Lightner Museum

75 King St.
St. Augustine, FL 32084
(904) 824-2874
lightnermuseum.org
Monday to Sunday: 9 a.m. to 5 p.m. (*Last admission is at 4:30 p.m.*)
Adults: \$15
Seniors, College Students and Active Military: \$12
Ages 12-17: \$8
Ages 11 and under: Free

Lightner Museum is housed in the former Alcazar Hotel built in 1888 by Henry Flagler. Tours of the museum can be self-guided, or guided tours may be made by reservation. The museum collection features Otto Lightner's collection of fine and decorative art from the 19th century, including Tiffany glass, furniture, sculptures and fine art paintings.

Lincolnvillemuseum and Cultural Center

102 Martin Luther King Ave.
St. Augustine, FL, 32084
(904) 824-1191
www.lincolnvillemuseum.org
Monday: Closed
Tuesday to Saturday: 12:30 p.m. to 4:30 p.m.
Appointments available.
Adults: \$10; **Children:** \$5

The Lincolnvillemuseum and Cultural Center (LMCC) is housed in St. Augustine's first high school for African Americans, the Excelsior, built in 1924. The museum exhibits artifacts, photographs and stories of the trials and triumphs of the 450-plus years of the Ancient City's history from a Black perspective. A rich history of early Lincolnvillemuseum residents and former Excelsior students and faculty tells a story of the quest for education that united a community of descendants of ex-slaves who helped to establish the community.

Ripley's Believe It or Not!

19 San Marco Ave.
St. Augustine, FL 32084
(904) 824-1606
www.ripleys.com/staugustine
Monday to Sunday: 9 a.m. to 8 p.m.
Adults: \$14.99
Children (ages 5-11): \$6.99

Special group rates and combo tickets are available.

Ripley's Believe it or Not! in St. Augustine features three stories of oddities, some from Robert Ripley's own personal collection. In addition to the exhibits, there are dozens of interactives to make the visit fun and memorable. Ripley's also has Red Train tours that guide visitors through America's oldest city, a Ghost Train Adventure that showcases some of St. Augustine's most paranormal locations and experiences, and more.

St. Augustine Lighthouse & Maritime Museum

81 Lighthouse Ave.
St. Augustine, FL 32080
(904) 829-0745
www.staugustinelighthouse.com
Monday to Sunday: 9 a.m. to 6 p.m. (Closed Thanksgiving and Christmas)
Adults: \$12.95
Seniors, Children ages 12 and under: \$10.95
Children under 44 inches: Free

**Children must be 44 inches tall to climb the tower.*

The St. Augustine Lighthouse & Maritime Museum, Inc. is a private, nonprofit museum dedicated to its mission to discover, preserve, present and keep alive the stories of the nation's oldest port as symbolized by the working Lighthouse. General admission tickets include full access to the tower, the restored Keepers' house, all Museum exhibits, World War II Guard

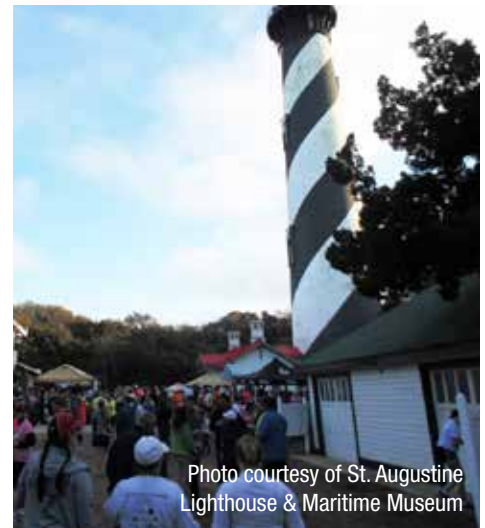


Photo courtesy of St. Augustine Lighthouse & Maritime Museum

Barracks, nature trails, the Maritime Education Center and the museum's maritime archaeology artifacts. The museum also features interactive programs, wooden boatbuilding demonstrations, a Dark of the Moon Paranormal Tour, sunset and moonrise tours and a variety of other special events and programs throughout the year.

St. Augustine Pirate & Treasure Museum

12 South Castillo Drive
St. Augustine, FL 32084
(877) 467-5863
thepiratemuseum.com

Monday to Sunday: 10 a.m. to 7 p.m.

Adults: \$14.99

Seniors and Military: \$11.99

Children: \$7.99

The St. Augustine Pirate & Treasure Museum offers an exciting and educational museum experience that transports families back in time over 300 years to Port Royal, Jamaica, at the height of the Golden Age of Piracy. The property boasts a scenic outdoor courtyard and a large deck that overlooks the historic Matanzas River and the Castillo de San Marcos. The museum spans about 5,000 square feet with a 1,300-square-foot courtyard and an approximately 500-square-foot upper deck.

World Golf Hall of Fame

One World Golf Place
St. Augustine, FL 32092
(904) 940-4123

www.worldgolfhalloffame.org

Monday to Saturday: 10 a.m. to 6 p.m.

Sunday: Noon to 6 p.m.

(Closed Thanksgiving and Christmas Day. Holiday hours on Christmas Eve and New Year's Day.)

Adults: \$20.95

Seniors, Military and Florida Residents (with valid ID):
\$19.95

Students ages 13 and over with valid ID: \$10

Children ages 5-12: \$5

Children ages 4 and under: Free

**St. Johns County residents receive 30 percent off full priced adult admission with identification.*

The World Golf Hall of Fame and Museum serves as a steward of the game through engaging, interactive storytelling and exhibitions featuring artifacts, works of art, audio, video and photography significant to the history of golf and its members. The museum features traveling exhibits, educational programs, a golf simulator, member locker room, an IMAX Theater, a Hall of Fame Challenge and much more.

AMELIA ISLAND
MUSEUM OF HISTORY
www.ameliamuseum.org



4,000 Years of History on the Isle of Eight Flags
233 SOUTH 3RD ST. • FERNANDINA BEACH • 904.261.7378

DUVAL COUNTY



Beaches Museum

381 Beach Blvd.
Jacksonville Beach, FL 32250
(904) 241-5657

www.beachmuseum.org

Monday: Closed

Tuesday to Saturday: 10 a.m. to 4 p.m.

Sunday: Noon to 4 p.m.

Admission is free.

The Beaches Museum features both rotating and permanent exhibitions of art and history, including several historical structures such as the Mayport East Coast Railway Depot, the Beaches Museum Chapel, the 1903 Pablo Beach Post Office and the 1911 Train Engine. In addition to exhibitions, the museum offers community entertainment with their Chapel Concert series and Boardwalk Talk sessions.

Ride The Red!

SEE ST. AUGUSTINE YOUR WAY!

More Tours
More Options
More Fun!

Since 1953

RED TRAIN TOURS

www.Ripleys.com/RedTrains (904) 829-6545

Ripley's
GHOST TRAIN ADVENTURE

Join a Paranormal Investigation with Laser Grids & E.M.F. Meters to visit the city's most haunted sites including Ripley's Museum!

Information & Reservations 904 824-1606
www.GhostTrainAdventure.com

Ripley's
Believe It or Not!

AMAZING ODDITIES!

19 SAN MARCO AVE.
(904) 824-1606
www.RIPLEYS.COM/ST.AUGUSTINE

Cummer Museum of Art & Gardens

829 Riverside Ave.
Jacksonville, FL 32204
(904) 356-6857

www.cummERMuseum.org

Monday: Closed

Tuesday: 10 a.m. to 9 p.m.

Wednesday to Saturday: 10 a.m. to 4 p.m.

Sunday: Noon to 4 p.m.

Adults: \$10

Seniors, Students and Military: \$6

College students: Free Tuesday through Friday

Children 5 and under: Free

The Cummer Museum of Art & Gardens Permanent Collection of nearly 5,000 objects spans from 2100 B.C. though the 21st century and includes masterpieces created by Peter Paul Rubens, Winslow Homer, Thomas Moran, Norman Rockwell and Romare Bearden. It is also home to the Wark Collection of early Meissen porcelain. Located on the banks of the St. Johns River, the Gardens stretch back more than 100 years and bear the imprint of some of the foremost names in landscape design and horticulture, including Ossian Cole Simonds, Ellen Biddle Shipman, Thomas Meehan and Sons and the fabled Olmsted firm. Features such as reflecting pools, fountains, arbors, antique ornaments and sculptures help create a special outdoor space that provides a perfect complement to the Museum's Permanent Collection.

Hands On Children's Museum

8580 Beach Blvd.
Jacksonville, FL 32216
(904) 642-2688
handsonchildrensmuseumjax.startlogic.com

Monday to Saturday: 9:30 a.m. to 5 p.m.

Sunday: Closed

Ages 1-3: \$4

Ages 4 and up (including adults): \$5.50

The Hands On Children's Museum promotes hands-on participatory learning for children of all ages. The museum encourages discovery through observation, inquiry, creative construction, role-playing, problem-solving and free play.

Karpeles Manuscript Library

101 West First St.
Jacksonville, FL 32206
(904) 356-2992

karpeles.weebly.com

Tuesday to Friday: 10 a.m. to 3 p.m.

Saturday: 10 a.m. to 4 p.m.

Sunday, Monday: Closed

Admission is free.

The Karpeles Manuscript Library in Jacksonville is one of 11 Karpeles museums around the country. The museum's primary mission is the preservation of the writings of great authors, scientists, composers, philosophers, statesmen, sovereigns and leaders, from all periods in world history.

The St. Augustine Historical Society

*We are committed to the preservation and interpretation
of the oldest city in the United States*

The St. Augustine Historical Society is committed to the preservation and interpretation of historically significant structures, artifacts, and documentary materials that concern the nation's oldest city.

We own and operate The Oldest House Museum, the St. Augustine Historical Society Research Library, and provide beautiful historical gardens for weddings and events.



Main Office: (904) 824-2872 | Library: (904) 825-2333 | www.saintaugustinehistoricalsociety.org

Mandarin Museum & Historical Society

11964 Mandarin Road
Jacksonville, FL 32223
(904) 268-0784

www.mandarinmuseum.net

Saturday: 9 a.m. to 4 p.m.

Mandarin Store & Post Office

(12471 Mandarin Road): Open every first Saturday from 10 a.m. to 2 p.m.

Walter Jones Historical Park: Open every day from sunrise to sunset

Admission is free.

The Mandarin Museum & Historical Society takes visitors back to old Florida. Explore a restored homestead site and relax on a riverfront boardwalk. Interactive exhibits present the history of the area. The museum's permanent exhibits feature the history of Mandarin and the river that defines the community. Displays include artifacts from Harriet Beecher Stowe's Mandarin winter home and items recovered from the Civil War-era steamboat "Maple Leaf." Next to the museum is the St. Joseph's Mission Schoolhouse for African-American Children. Built in 1898 and moved to the park in 2015, the exhibit tells the story of the school as well as others in the area during the post-Civil War era.

Museum of Contemporary Art Jacksonville



Photo courtesy
of Visit Jacksonville

333 North Laura St.
Jacksonville, FL 32202
(904) 366-6911
mocajacksonville.unf.edu
Monday: Closed
Tuesday, Wednesday, Friday,
Saturday: 11 a.m. to 5 p.m.
Thursday: 11 a.m. to 9 p.m.
Sunday: Noon to 5 p.m.
Open the first Wednesday of every month from 5 to 9 p.m.
Adults: \$8
Seniors, Military and Students: \$5
Children ages 2-12: \$5
Children younger than 2: Free

The Museum of

Contemporary Art (MOCA) Jacksonville is a private, nonprofit, visual arts, educational institution and cultural institute of the University of North Florida. It serves the community and its visitors through exhibitions, collections, educational programs and publications designed to enhance an understanding and appreciation of modern and contemporary art with particular emphasis on works created from 1960 to the present. The museum features rotating exhibits and a permanent collection, consisting of nearly 1,000 works of art including painting, printmaking, sculpture and photography.

SHOWCASING THE TREASURES & ARCHITECTURE OF THE GILDED ERA

AMERICAN BRILLIANT CUT GLASS GALLERY

ONE OF THE FINEST MUSEUM COLLECTIONS
OF AMERICAN BRILLIANT CUT & ENGRAVED
GLASS IN THE COUNTRY.

OPENING THIS SUMMER

LIGHTNER  MUSEUM

75 King Street, Saint Augustine, Florida 32084 | 904.824.2874

LightnerMuseum.org

FUNDED IN PART BY
VISITFLORIDA

NO CULTURE
BUILDS
FLORIDA

CULTURE AROUND
EVERY CORNER.

ST AUGUSTINE | PONTE VEDRA
31 HISTORIC DISTRICTS | HISTORIC DEVELOPMENT COUNCIL
HistoricCoastCulture.com

THE COMMUNITY
FOUNDATION
FOR NORTHEAST FLORIDA

Museum of Science and History

1025 Museum Circle
Jacksonville, FL 32207
(904) 396-6674

www.themosh.org

Monday to Thursday: 10 a.m. to 5 p.m.

Friday: 10 a.m. to 8 p.m.

Saturday: 10 a.m. to 6 p.m.

Sunday: Noon to 5 p.m.

Adults: \$15

Students, Teachers, Youth and Young Adults, Seniors and Military: \$12

Children 2 and under: Free

The Museum of Science and History (MOSH) has several permanent, core exhibits, along with traveling exhibits and monthly activities for children and adults. The core exhibits include "Atlantic Tails," an up-close look at the coastal creatures of Northeast Florida; the Florida Naturalist's Center, which houses native Florida animals including owls, snakes, turtles, tortoises and baby alligators; and "Currents of Time: A History of Jacksonville & Northeast Florida," among others. MOSH houses the Bryan-Gooding Planetarium, one of the largest single-lens digital dome planetariums in the United States where pre-produced productions, live star shows and First Friday Cosmic Concerts take place. MOSH also hosts a series of adult-only events, such as "Mosh After Dark."



Photo courtesy of Visit Jacksonville

Ritz Museum

829 North Davis St.
Jacksonville, FL 32202
(904) 807-2010

www.ritzjacksonville.com

Monday: Closed

Tuesday to Friday: 10 a.m. to 5 p.m. (*tickets must be purchased by 4 p.m.*)

Saturday, Sunday: By appointment only

Adults (ages 18-64): \$8

Students and Seniors (65+): \$5

Children under 3: Free

Group rates and group tours are available.

The Ritz Theatre and Museum was constructed in 1999 on the site of the 1929 Ritz Theater movie house in Jacksonville's historic African American community of La Villa. During La Villa's height of activity from the 1920s to 1960s, it was known as the "Harlem of the South." The mission of the Ritz Theatre and Museum



Photo courtesy of Visit Jacksonville

is to research, record and preserve the material and artistic culture of African American life in Northeast Florida and the African Diaspora, and present in an educational or entertaining format the many facets that make up the historical and cultural legacy of this community. Theatre and museum highlights include permanent and rotating exhibitions, music, dance and dramatic arts.

NASSAU COUNTY

Amelia Island Museum of History

233 South Third St.

Fernandina Beach, FL 32034

(904) 261-7378

www.ameliainmuseum.org

Monday to Saturday: 10 a.m. to 4 p.m.

(Free Friday hours 4 p.m. to 6 p.m.)

Sunday: 1 p.m. to 4 p.m.

Adults: \$8

Students and Military: \$5

The Amelia Island Museum of History features temporary exhibitions as well as permanent exhibits such as the Discovery Ship, an interactive exhibit for children to learn about how to pilot a ship, knot tying and other activities. Other permanent exhibits include Timucuan Village, Historic Preservation, Footprints in Time, Spanish Missions of La Florida, Civil War and The Florida Railroad, Nassau County and Jail Cell. Docent-led museum tours are scheduled regularly.



Photo courtesy of Deremer Studios LLC/www.ameliainisland.com

Maritime Museum of Amelia Island

115 South Second St., Suite B

Fernandina Beach, FL 32034

(904) 277-1948

www.maritimemuseumai.org

Monday: Closed

Tuesday to Saturday: 10 a.m. to 5 p.m.

(Last guided tour is 4:30 p.m.)

Sunday: Closed

Adults: \$5

Students: \$2

Children under 12: Free

The Maritime Museum of Amelia Island features artifacts rich in local maritime history and historical items including U.S. Navy memorabilia, weapons from multiple time periods, a Soviet era KGB diving suit and artifacts from an actual expedition. The museum also has items and information regarding pirates, French and Spanish treasure fleets and more.



Millennium Physician Group Now Accepting New Patients

Primary Care Locations:

Jacksonville:

1201 Monument Road, Suite 201B
Jacksonville, FL 32225
(904) 727-5151

7685 103rd Street, Suite 203
Jacksonville, FL 32210
(904) 425-6963

5851 Timuquana Road, Suite 303
Jacksonville, FL 32210
(904) 674-2699

7011 AC Skinner Parkway, Suite 160
Jacksonville, FL 32256
(904) 420-6102

11513 N. Main Street
Jacksonville, FL 32218
(904) 751-6200

Ponte Vedra Beach:

228 Ponte Vedra Park Drive, Suite 500
Ponte Vedra Beach, FL 32082
(904) 273-1180

MacClenny:

725 S 6th Street
MacClenny, FL 32063
(904) 259-3150

As one of the largest independent physician groups in Florida, Millennium is proud to now offer primary care services to patients in Jacksonville, Ponte Vedra, and MacClenny.

We welcome you to our offices not just as a patient, but as our family, the Millennium family.

Now Offering:

- Primary Care Services
- Accepting Most Major Insurances
- Same Day Appointments
- Annual Wellness Visits
- Lab Services

Call us today, or visit www.MillenniumPhysician.com to book your appointment.

**MILLENNIUM**
PHYSICIAN GROUP
Your Connection to a Healthier Life



Photo courtesy of The Collector Luxury Inn & Gardens



Photo courtesy of Ponte Vedra Inn & Club

ST. JOHNS COUNTY

St. Augustine

Bayfront Marin House

142 Avenida Menendez,
St. Augustine, FL 32084
(904) 824-4301
www.bayfrontmarinhouse.com

Casa Monica Resort & Spa

95 Cordova St.
St. Augustine, FL 32084
(904) 827-1888
www.kesslercollection.com/casa-monica/

Hilton St. Augustine Historic Bayfront

32 Avenida Menendez
St. Augustine, FL 32084
(904) 829-2277
www.hilton.com

La Quinta Inn & Suites by Wyndham

St. Augustine Historic Area
215 Anastasia Blvd.
St. Augustine, FL 32080
(904) 217-7052
www.wyndhamhotels.com

Marker 8 Hotel & Marina

1 Dolphin Dr.
St. Augustine, FL 32080
(904) 829-9042
www.marker8hotel.com

St. George Inn

4 St. George St. #101
St. Augustine, FL 32084
(904) 827-5740
www.stgeorge-inn.com

The Collector Luxury Inn & Gardens

149 Cordova St.
St. Augustine, FL 32084
(904) 209-5800
www.thecollectorinn.com

The Cozy Inn

202 San Marco Ave.
St. Augustine, FL 32084
(904) 824-2449
www.thecozyinn.com

The St. Augustine Beach House

10 Vilano Road
St. Augustine, FL 32084
(904) 217-3765
www.sabhonline.com

World Golf Village Renaissance

St. Augustine Resort
500 South Legacy Trail
St. Augustine, FL 32092
(904) 940-8000
www.marriott.com

Ponte Vedra Beach

Hilton Garden Inn

Jacksonville/Ponte Vedra
45 PGA Tour Blvd.
Ponte Vedra Beach, FL 32082
(904) 280-1661
www.hilton.com

Ponte Vedra Inn & Club

200 Ponte Vedra Blvd.
Ponte Vedra Beach, FL 32082
(904) 285-1111
www.pontevedra.com/inn_and_club

Sawgrass Marriott Golf Resort & Spa

1000 PGA Tour Blvd.
Ponte Vedra Beach, FL 32082
(904) 285-7777
www.marriott.com

The Lodge & Club

607 Ponte Vedra Blvd.
Ponte Vedra Beach, FL 32082
(904) 273-9500
www.pontevedra.com/lodge

DUVAL COUNTY

The Beaches

Best Western Oceanfront

305 First St. North
Jacksonville Beach, FL 32250
(904) 249-4949
www.bestwestern.com

Casa Marina Hotel

691 First St. North
Jacksonville Beach, FL 32250
(904) 270-0025
www.casamarinahotel.com

Courtyard by Marriott Jacksonville Beach Oceanfront

1617 North First Street
Jacksonville Beach, FL 32250
(904) 435-0300
www.marriott.com

Fairfield Inn & Suites by Marriott Jacksonville Beach

1616 North First St.
Jacksonville Beach, FL 32250
(904) 435-0100
www.marriott.com



Photo courtesy of Ponte Veda Lodge & Club



Photo courtesy of Visit Jacksonville

Four Points by Sheraton Jacksonville Beachfront

11 First St. North
Jacksonville Beach, FL 32250
(904) 435-3535
www.marriott.com

Hampton Inn Jacksonville Beach/Oceanfront

1515 First St. N.
Jacksonville Beach, FL 32250
(904) 241-2311
www.hamptoninn.com

Hampton Inn Jacksonville/ Ponte Veda Beach – Mayo Clinic Area

1220 Marsh Landing Parkway
Jacksonville Beach, FL 32250
(904) 280-9101
www.hamptoninn.com

Hotel Palms

28 Sherry Drive
Atlantic Beach, FL 32233
(904) 241-7776
www.thehotelpalms.com



Life happens.
We have space.

(and boxes.)

1-877-WE-STORE



atlanticselfstorage.com

One Ocean Resort & Spa

1 Ocean Blvd.
Atlantic Beach, FL 32233
(904) 249-7402
www.oneoceanresort.com

Downtown Jacksonville

DoubleTree by Hilton Hotel Jacksonville Riverfront

1201 Riverplace Blvd.
Jacksonville, FL 32207
(904) 398-8800
www.hilton.com

Hampton Inn

Jacksonville-Downtown-I-95
1331 Prudential Drive
Jacksonville, FL 32207
(904) 396-7770
www.hamptoninn.com

Hyatt Regency Jacksonville

225 East Coastline Drive
Jacksonville, FL 32202
(904) 588-1234
www.hyatt.com



Photo courtesy of One Ocean Resort & Spa



Photo courtesy of Visit Jacksonville

Lexington Hotel & Conference Center Jacksonville Riverwalk

1515 Prudential Drive
Jacksonville, FL 32207
(904) 396-5100
www.redlion.com

Omni Jacksonville Hotel

245 Water St.
Jacksonville, FL 32202
(904) 355-6664
www.omnihotels.com

NASSAU COUNTY

Amelia Hotel at the Beach

1997 South Fletcher Ave.
Amelia Island, FL 32034
(904) 206-5200
www.ameliahotel.com

Comfort Suites Fernandina Beach at Amelia Island

2801 Atlantic Ave.
Fernandina Beach, FL 32034
(904) 261-0193
www.choicehotels.com

Now Open!

BEACHES GENTLE DENTISTRY
www.BeachesGentleDentistry.com

Gentle & Compassionate Care

SAME DAY APPOINTMENTS

3316 Third Street South, #101
Jacksonville Beach, FL 32250
904.853.6888
www.BeachesGentleDentistry.com



- Remote Controlled Screens for Garage Doors, Lanais & Patios
- Remote Controlled Retractable Awnings, Shades & Outdoor Privacy Blinds
- Commercial shades for outdoor restaurants

ROLLSCREEN
386.437.5655

Photo courtesy of Seaside Amelia Island

Elizabeth Point Lodge
94 South Fletcher Ave.
Fernandina Beach, FL 32034
(904) 277-4851
www.elizabethpointeameliasland.com

Florida House Inn
22 South Third St.
Fernandina Beach, FL 32034
(904) 491-3322
www.floridahouseinn.com

**Hampton Inn Amelia Island
at Fernandina Beach**
2549 Sadler Road
Fernandina Beach, FL 32034
(904) 321-1111
www.hamptoninn.com

**Hampton Inn & Suites Amelia
Island-Historic Harbor Front**
19 South Second St.
Fernandina Beach, FL 32034
(904) 491-4911
www.hamptoninn.com



Photo courtesy of Orlando Segura

**Omni Amelia Island
Plantation Resort**
39 Beach Lagoon Road
Fernandina Beach, FL 32034
(904) 261-6161
www.omnihotels.com

**Residence Inn by Marriott
Amelia Island**
2301 Sadler Road
Fernandina Beach FL 32034
(904) 277-2440
www.marriott.com

Seaside Amelia Inn
2900 Atlantic Ave
Amelia Island, FL 32034
(904) 206-5300
www.seasideameliainn.com

**The Ritz-Carlton
Amelia Island**
4750 Amelia Island Parkway
Amelia Island, FL 32034
(904) 277-1100
www.ritzcarlton.com

Janet E. Johnson, P.A.

Criminal Defense Attorney



Janet Johnson is committed to aggressively defending people accused in all criminal matters in state and federal court. In practice since 1994, she is a member of the Florida Bar, The Federal Bar, Colorado Bar, as well as the Florida Association of Criminal Defense Lawyers. She has been on the faculty of FACDL "Blood, Breath & Tears" annual DUI seminar. Ms. Johnson has been awarded the AV preeminent rating™ from Martindale-Hubble® and was named a fellow to the prestigious Litigation Counsel of America™, as well as one of the ten best criminal defense attorneys nationally for client satisfaction by the American Institute of Criminal Law Attorneys. She also appears as a legal commentator on CNN and HLN.

Areas of criminal law that are handled by Janet Johnson:

- DUI Defense • Federal Cases • Robbery/Burglary • Assault & Battery
- Juvenile Cases • Domestic Violence • Sex Offenses • Child Abuse/Exploitation
- Health Care Fraud • Drug Trafficking/Possession • Shop-Lifting
- Probation Violations • White Collar Crime

Please call our office for a free initial consultation.

3219 Atlantic Blvd., Jacksonville, FL 32207 904.634.8991
janetejohnsonlaw.com

The hiring of a lawyer is an important decision that should not be based solely upon advertisements. Before you decide, ask us to send you free written information about our qualifications and experience.

Celebrating 50 years of the
PONTE VEDRA

Recorder

Not your average newspaper, not your average reader

REGISTER

FIRST COAST

Currently celebrating 50 years of publishing excellence, the award-winning **Ponte Vedra Recorder** is the paper residents turn to for credible, thoughtful, original reporting. Our coverage of public affairs is second to none, offering readers timely and compelling coverage of the important issues that affect their daily lives.

For over 10 years, **The First Coast Register**, our social full color glossy magazine, has covered the First Coast's most swanky galas and events as well as features on some of the community's most interesting people and businesses.

The Community Values Our Legacy



Scott Grant
President, CEO
Standfast Asset Management



Christine Griggs
GM, Ruth's Chris
Ponte Vedra Beach



Melissa Nelson
President, CEO
United Way of
St. Johns County

LOOK FOR US TO COVER OUR AREA'S

Community News • Sports • Business • Social life
Charitable Events • Highly Anticipated Happenings
Upscale Dining • Trending Fashions • Luxury Travel
Opulent Residences • Local Art Scene • And Much More



Loretta Swit
Honorary board member for Ayla's
Acres and actress in "M*A*S*H"

ADD TO THE LEGACY

Advertising or Editorial Submissions

Call (904) 285-8831

or email pvrecorder@opcfla.com

1102 A1A N., Unit 108
Ponte Vedra Beach, FL 32082



Karina Coryell
Trasca & Co. Eatery

SCHOOL DISTRICTS

St. Johns County School District

40 Orange St.
St. Augustine, FL 32084
(904) 547-7500
www.stjohns.k12.fl.us

Duval County Public Schools

1701 Prudential Drive
Jacksonville, FL 32207
(904) 390-2000
dcps.duvalschools.org

Nassau County School District

1201 Atlantic Ave.
Fernandina Beach, FL 32034
(904) 491-9900
www.nassau.k12.fl.us

SHERIFF'S OFFICES

For major emergencies, dial 911.

St. Johns County

4015 Lewis Speedway
St. Augustine, FL 32084
(904) 824-8304
www.sjsso.org

Duval County

501 East Bay St.
Jacksonville, FL 32202
(904) 630-0500
www.jaxsheriff.org

Nassau County

77151 Citizens Circle
Yulee, FL 32097
(904) 225-5174
www.nassauso.com

FIRE DEPARTMENTS

St. Johns County Fire Rescue

3657 Gaines Road
St. Augustine, FL 32084
(904) 209-1700
www.sjcfi.us/FireRescue/index.aspx
Monday to Friday: 8 a.m. to 4:30 p.m.

Jacksonville Fire & Rescue Department

515 North Julia St.
Jacksonville, FL 32202
(904) 630-0434
myjfrd.com
Monday to Friday: 8 a.m. to 5 p.m.

Nassau County Fire Rescue Department

96160 Nassau Place
Yulee, FL 32097
(904) 530-6600
www.nassaucountyfl.com/122/Fire-Rescue
Monday to Friday: 8 a.m. to 5 p.m.

HEALTH DEPARTMENTS

St. Johns County

200 San Sebastian View
St. Augustine, FL 32084
(904) 209-3250
stjohns.floridahealth.gov
Monday to Friday: 8 a.m. to 5 p.m.

Duval County

900 University Blvd. North
Jacksonville, FL 32211
(904) 253-1000
duval.floridahealth.gov
Monday to Friday: 8 a.m. to 5 p.m.

Nassau County

30 South 4th St.
Fernandina Beach, FL 32034
(904) 875-6100
nassau.floridahealth.gov
Monday to Friday: 8 a.m. to 5 p.m.

POISON CONTROL

For life-threatening emergencies, dial 911.

American Association of Poison Control Centers

(800) 222-1222
www.aapcc.org

Regional Florida/USVI Poison Information Center – Jacksonville UF Health Jacksonville Medical Center University of Florida Health Science Center – Jacksonville

655 West 8th St., Box C23
Jacksonville, FL 32209
For Poisoning Emergencies:
1-800-222-1222 (call center)
Administrative Offices: (904) 244-4465
www.fpicjax.org
Call center available 24/7; Administrative Offices open Monday to Friday from 8 a.m. to 4:30 p.m.

CLERKS OF COURT

St. Johns County Clerk of Court

4010 Lewis Speedway
St. Augustine, FL 32084
(904) 819-3600
www.stjohnsclerk.com
Monday to Friday: 8 a.m. to 5 p.m.

Duval County Clerk of Court

www2.duvalclerk.com
501 West Adams St.
Jacksonville, FL 32202
(904) 255-2000
Monday to Friday: 8 a.m. to 5 p.m.

Duval County Clerk of Court – Beaches Branch

www2.duvalclerk.com
1543 Atlantic Blvd.
Neptune Beach, FL 32266
(904) 255-2000
Monday to Friday: 8 a.m. to 4:30 p.m.

Nassau County Clerk of Court – Robert M. Foster Justice Center

76347 Veterans Way
Yulee, FL 32097
(904) 548-4600
www.nassauclerk.com
Monday to Friday: 8:30 a.m. to 5 p.m.

Nassau County Clerk of Court – Historic Courthouse

416 Centre St.
Fernandina Beach, FL, 32034
(904) 548-4600
www.nassauclerk.com
Monday to Friday: 8:30 a.m. to 5 p.m.

CHAMBERS OF COMMERCE

St. Johns County Chamber of Commerce

1 News Place
St. Augustine, FL 32086
(904) 829-5681
www.sjcchamber.com
Monday to Friday: 9 a.m. to 5 p.m.

St. Johns County Chamber of Commerce Ponte Vedra Beach Division (official Florida Visitor's Center)

200 Solana Road, Suite B
Ponte Vedra Beach, FL 32082
(904) 285-2004
www.sjcchamber.com/ponte-vedra-beach-division
Monday to Friday: 9 a.m. to 5 p.m.

JAX Chamber

3 Independent Drive
Jacksonville, FL 32202
(904) 366-6600
www.myjaxchamber.com
Monday to Friday: 9 a.m. to 5 p.m.

JAX Chamber Beaches Division

1300 Marsh Landing Parkway, Suite 108
Jacksonville Beach, FL 32250
(904) 273-5366
www.myjaxchamber.com/get-involved/beaches-division/

Nassau County Chamber of Commerce

961687 Gateway Blvd, Suite 101G
Fernandina Beach, FL 32034
(904) 261-3248
Nassaucountyflchamber.com



Mitchell A. Stone, P.A.

Board Certified Legal Services

Board Certified Criminal Trial Law, Peer Reviewed Excellence

REPRESENTATION YOU CAN TRUST

Our goal is to provide all of our clients with the highest quality of legal representation and the best defense under the law.



If you are facing charges, have been contacted by law enforcement or need legal advice please call: (904) 396-3335

1830 Atlantic Blvd., Jacksonville, FL 32207
mitch@jacksonvilledefense.com



www.JacksonvilleDefense.com

DMV LOCATIONS

ST. JOHNS COUNTY

To get information and helpful links on how to renew your license, car title or registration in St. Johns County, visit www.dmvflorida.org/st-johns.shtml. Below are some of the DMV offices in the county.

St. Augustine

4030 Lewis Speedway
St. Augustine, FL 32084
(904) 209-2250

Monday to Thursday:

8:30 a.m. to 5 p.m.

Friday:

8:30 a.m. to 6 p.m.

Last Saturday of the month:

8:30 a.m. to noon

Dupont Center

6658 U.S. 1 South
St. Augustine, FL 32086
(904) 209-2250

Monday to Friday:

8:30 a.m. to 5 p.m.

Julington Creek

725 Flora Branch Blvd.
Julington Creek, FL 32259
(904) 209-2250

Monday to Friday:

8:30 a.m. to 5 p.m.

Ponte Vedra Beach

151 Sawgrass Corners Drive,
Suite 100,
Ponte Vedra Beach FL 32082
(904) 209-2250

Monday to Friday:

8:30 a.m. to 5 p.m.

DUVAL COUNTY

To get information and helpful links on how to renew your license, car title or registration in Duval County, visit www.dmvflorida.org/duval.shtml. Below are some of the DMV offices in the county.

Jacksonville

231 East Forsyth St.
Jacksonville, FL 32202
(904) 630-1916

Monday to Friday:

8 a.m. to 4:30 p.m.

Jacksonville

7120-15 Hogan Road
Jacksonville, FL 32216
(904) 630-1916

Monday to Friday:

8 a.m. to 4:30 p.m.

NOW SELLING!

CORTEZ

on the water

St. Augustine's Newest Luxury
Waterfront Condominiums



FREE 40' BOAT SLIP WITH EACH UNIT

(65' AND WIDER ARE AVAILABLE)
www.cortezonthewater.com



Donna Wendler
Broker/Owner
904-669-3081
Wendler22@yahoo.com

THE ST. JOHNS
REALTY GROUP
"We're The Difference"
www.thestjohnsrealtygroup.com

134 King Street, St. Augustine, FL 32084

SALES • RESIDENTIAL COMMERCIAL • INVESTMENT PROPERTY SALES

48 LIVING HERE 2019



Marchand Faries Financial Management, Inc.

Should you work with us? Probably not.

Our firm isn't for everyone. For those people who want to "time" the market, are looking for the next "hot stock", disregard expert advice in favor of "a feeling," or are primarily focused on the short term, we invite you to continue your search, as there are many brokers ready to sell you something and help you try to outguess the market.

However, if you have investable assets of over \$500,000 and are looking for an adviser who has a fiduciary duty to always act in their best interest, we may be what you are searching for. We choose to work with clients where we see opportunities to help them reach their goals as a long-term partner.

If this sounds like you, call us as we take on only a limited number of new clients each year. If not, we wish you the best of success in your search.



Jane E. Marchand
President, Registered Investment Advisor

Members of NAPFA, a Fee Only Organization, for over 15 years!



Proudly serving clients nationally for over 23 years

904-805-0207

jane@mffm.com • www.mffm.com

Jacksonville

6672 Commonwealth Blvd.
Jacksonville, FL 32254
(904) 630-1916

Monday to Friday:

8 a.m. to 4:30 p.m.

Jacksonville

10035 San Jose Blvd.
Jacksonville, FL 32257
(904) 630-1916

Monday to Friday:

8 a.m. to 4:30 p.m.

Jacksonville

12220 Atlantic Blvd., Suite 102
Jacksonville, FL 32225
(904) 630-1916

Monday to Friday:

8 a.m. to 4:30 p.m.

Jacksonville

3520-1 Blanding Blvd.
Jacksonville, FL 32210
(904) 630-1916

Monday to Friday:

8 a.m. to 4:30 p.m.

Jacksonville

12961 North Main St., Suite 210
Jacksonville, FL 32218
(904) 630-1916

Monday to Friday:

8 a.m. to 4:30 p.m.

Jacksonville

910 West 44th St.
Jacksonville, FL 32208
(904) 630-1916

Monday to Friday:

8 a.m. to 4:30 p.m.

Neptune Beach

1505 Atlantic Blvd.
Neptune Beach, FL 32266
(904) 630-1916

Monday to Friday:

8 a.m. to 4:30 p.m.

NASSAU COUNTY

To get information and helpful links on how to renew your license, car title or registration in Nassau County, visit www.dmvflorida.org/nassau.shtml. Below are some of the DMV offices in the county.

Fernandina Beach

86130 License Road
Fernandina Beach, FL 32034
(904) 491-7400

Monday to Friday: 8 a.m. to 5 p.m.

Fernandina Beach

416 Centre St.
Fernandina Beach, FL 32034
(904) 491-7400

Monday to Friday: 8:30 a.m. to 5 p.m.
(motor vehicle services)

Monday to Friday: 8:30 a.m. to 4 p.m.
(driver license services)

Callahan

450077 State Road 200, Suite 13
Callahan, FL 32011
(904) 491-7400

Monday to Friday: 8 a.m. to 5 p.m.

Hilliard

15885 County Road 108
Hilliard, FL 32046
(904) 845-3930

Monday to Thursday: 9 a.m. to noon, 1-4 p.m.

Friday: 9 a.m. to noon, 1-5 p.m.

TRANSPORTATION – AIRPORTS

Jacksonville International Airport

2400 Yankee Clipper Drive
Jacksonville, FL 32218
(904) 741-4902
www.flyjacksonville.com

Jacksonville Executive at Craig Airport

855-1 St. Johns Bluff Road North, #500
Jacksonville, FL 32225
(904) 741-5066
www.flyjacksonville.com/Home.aspx?sMP=JAXEX
Jacksonville Executive at Craig Airport (JAXEX) is a convenient location for corporate aviation and flight training.

Herlong Recreational Airport

9300 Normandy Blvd., #400
Jacksonville, FL 32221
(904) 783-2805
www.flyjacksonville.com/Home.aspx?sMP=HERLONG

A home of Jacksonville's aviation enthusiasts since the 1960s, Herlong Recreational Airport (HEG) is Northeast Florida's primary location for light sport aircraft, skydiving, gliders and other experimental aircraft.

Cecil Airport

13365 Simpson Way
Jacksonville, FL 32221
(904) 573-1611
www.flyjacksonville.com/Home.aspx?sMP=CECIL
Cecil Airport is a general and industrial aviation public use airport equipped to help businesses' bottom lines take flight. It is also the first FAA-licensed horizontal launch commercial spaceport on the East Coast and the eighth to be licensed in the U.S.

Northeast Florida Regional Airport

4900 U.S. Highway 1 North
St. Augustine, FL 32095
(904) 209-0090

www.flynf.com

The Northeast Florida Regional Airport is owned and operated by the St. Augustine - St. Johns County Airport Authority on behalf of the citizens of St. Johns County.

Fernandina Beach Municipal Airport

700 Airport Road
Fernandina Beach, FL 32034
(904) 310-3435
www.fbfl.us/66/Airport

The Fernandina Beach Municipal Airport is operated by the City of Fernandina Beach as an enterprise fund to be self-sustaining and does not require city general funds in its operation.

OTHER TRANSPORTATION

Jacksonville Amtrak Station

3570 Clifford Lane
Jacksonville, FL 32209
1-800-872-7245 (main Amtrak number; not Jacksonville specific)
www.amtrak.com/stations/jax
Monday to Sunday: 5:45 a.m. to 11:45 p.m.

Jacksonville Greyhound Station

1111 West Forsyth St.
Jacksonville, FL 32204
(904) 356-9976
www.greyhound.com
Monday to Sunday: 12 a.m. to 11:59 p.m.

St. Augustine Greyhound Stop

(tickets not sold here)
1 South Castillo Drive
Saint Augustine, FL 32084
(800) 231-2222
www.greyhound.com
Monday to Sunday: Midnight to 11:59 p.m.

***Megabus offers routes from Jacksonville to a few surrounding cities. Visit us.megabus.com for more information.**

St. Johns River Ferry

4610 Ocean St.
Atlantic Beach, FL 32233
(904) 241-9969
www.stjohnsriverferry.com
The St. Johns River Ferry is a car and passenger ferry that connects the north and south ends of Florida State Road A1A in Duval County, linking Mayport Village and Fort George Island via a pleasant sail across the St. Johns River. The 0.9-mile voyage crosses the St. Johns River 2.5 miles inland of the river's mouth and departs every half hour (visit website for exact schedule and ticket details).



Photo by Jon Blauvelt

FIRST COAST EVACUATION ROUTES

ST. JOHNS COUNTY

Ponte Vedra Beach/Sawgrass: North on SR-A1A, turn west onto Butler Boulevard and proceed to I-95 or points west.

Palm Valley/Nocatee area: Proceed southwest to CR-210 and proceed to I-95 or points west.

On coast halfway between Mickler's Landing and South Ponte Vedra Beach: North of Guana Dam, go north to SR-A1A and proceed west across Palm Valley Bridge on CR-210. South of Guana Dam, go south on SR-A1A and proceed west across Vilano Bridge. Continue west on SR-16 to I-95 or points west.

City of St. Augustine (mainland): North on US-1, turn west onto SR-16 or proceed southwest on SR-207 or south on US-1. Proceed to I-95 or points west.

City of St. Augustine (Davis Shores, Anastasia Island South to St. Augustine Alligator Farm): SR-A1A, proceed west across Bridge of Lions to US-1 North or US-1 South and/or to SR-16 or SR-207 to I-95 or points west.

City of St. Augustine and Anastasia Island north of the St. Augustine Amphitheater: Proceed north on SR-A1A across the Bridge of Lions and then go west.

City of St. Augustine and Anastasia Island south of the St. Augustine Amphitheater: Proceed south on SR-A1A, turn west on SR-312, proceed across 312 Bridge to SR-207 and proceed to I-95 or points west.

City of St. Augustine Beach: North to SR-312, proceed across 312 Bridge to SR-207 and proceed to I-95 or points west.

From the intersection of Ocean Trace Road and A1A to Crescent Beach: South on SR-A1A to Crescent Beach, turn west on SR-206, proceed across Crescent Beach Bridge to US-1 and proceed to I-95 or points west.

Crescent Beach to Flagler County Line: North on SR-A1A to Crescent Beach, turn west on SR-206, proceed across Crescent Beach Bridge to US-1 and proceed to I-95 or points west.

Source: St. Johns County Department of Emergency Management

DUVAL COUNTY

Non-residents and visitors: Traffic will be routed from the southern point of entry into Duval County on I-95 North, onto I-295 North and back onto I-95 North to exit the county.

Residents: Traffic will be routed westward from the Beaches community on either J. Turner Butler Boulevard, Beach Boulevard or Atlantic Boulevard. Traffic will then be routed westward through the downtown area to I-10 West until evacuees have entered a public shelter, reached a safe area in the county or departed the county. Other areas within the pre-designated evacuation zones generally travel through the downtown area onto I-10 West until evacuees move into a shelter or depart Duval County.

Source: City of Jacksonville emergency preparedness

NASSAU COUNTY

According to Nassau County Emergency Management, those evacuating the county during a hurricane should take either State Road 200/A1A; Heckscher Drive if they're going south or State Road 200 or U.S. Route 17 if they're coming from Yulee. For those in the west side of the county, emergency management officials advise taking U.S. Route 1 to evacuate.

Source: Nassau County Emergency Management



ROLL DOWN SHUTTERS CLOSED



BAHAMA SHUTTERS



ACCORDIAN SHUTTERS



ROLL DOWN SHUTTERS OPEN



ROLL DOWN SHUTTERS CLOSED



Since 1982



LANAI ENCLOSURE CLOSED



LANAI ENCLOSURE OPEN

STORM SHUTTERS CAN SAVE YOU MONEY

**Storm Ready in Seconds
Protect your home from
wind driven rains
Plus added Security**

"Preventing water intrusion through windows and doors is far less costly than repairing structural damages. Additional benefits of shutters are protection from flying debris, increased property value, decreased property insurance, elimination of the need to remove furniture from balconies, control of light and UV fading damage, improved thermal insulation, increased security, and reduced exterior noise." Steven T, Ashwell, Architect

Call Today for your

FREE ESTIMATE

386-677-5533

1-800-223-6283

**305 Division Avenue – Ormond Beach FL 32174
WWW.WEATHERGUARDSHUTTERS.COM**

HURRICANE SHELTER GUIDE

ST. JOHNS COUNTY SHELTERS

Public Evacuation Shelters

Bartram Trail High School

7399 Longleaf Pine Parkway
St. Johns, FL 32259

Mill Creek Elementary School

3750 International Golf Parkway
St. Augustine, FL 32092

Creekside High School

100 Knights Lane
St. Johns, FL 32259

Osceola Elementary School

1605 Osceola Elementary Road
St. Augustine, FL 32084

Cunningham Creek Elementary

1205 Roberts Road
St. Johns, FL 32259

Patriot Oaks Academy

475 Longleaf Pine Parkway
St. Johns, FL 32259

Otis Mason Elementary School

207 Mason Manatee Way
St. Augustine, FL 32086

Durbin Creek Elementary School

4100 Race Track Road
St. Johns, FL 32259

Pedro Menendez High School

600 SR-206 West
St. Augustine, FL 32086

Fruit Cove Middle School

3180 Race Track Road
St. Johns, FL 32259

South Woods Elementary School

4750 SR-206 West
Elkton, FL 32033
*Pet-Friendly

Hickory Creek Elementary School

235 Hickory Creek Trail
St. Johns, FL 32259

Timberlin Creek Elementary School

555 Pine Tree Lane
St. Augustine, FL 32092
*Pet-Friendly

Special Needs Evacuation Shelters (Pre-registration required)

Freedom Crossing Academy

1365 Shetland Drive
St. Johns, FL 32259

Pacetti Bay Middle School

245 Meadowlark Lane
St. Augustine, FL 32092

Source: St. Johns County Department
of Emergency Management

Needs Shelters. Individuals going to special needs shelters must pre-register with the Duval County Emergency Management. If needed, transportation will be provided for those who pre-register. Visit www.jaxready.com for more information.

Source: City of Jacksonville
Emergency Preparedness

DUVAL COUNTY SHELTERS

Duval County's Emergency Management officials will determine which shelters will be opened during an incident and will communicate this information through the media, social media and the JaxReady App. The general population shelters are managed by the American Red Cross. These shelters are open to everyone and filled on a first-come, first-served basis. Animal Care and Protective Services facilitates the pet-friendly shelters. Duval County Health Department is responsible for Special

NASSAU COUNTY SHELTERS

General population

Bryceville Elementary

6504 Church Ave.
Bryceville, FL 32009

Callahan Intermediate

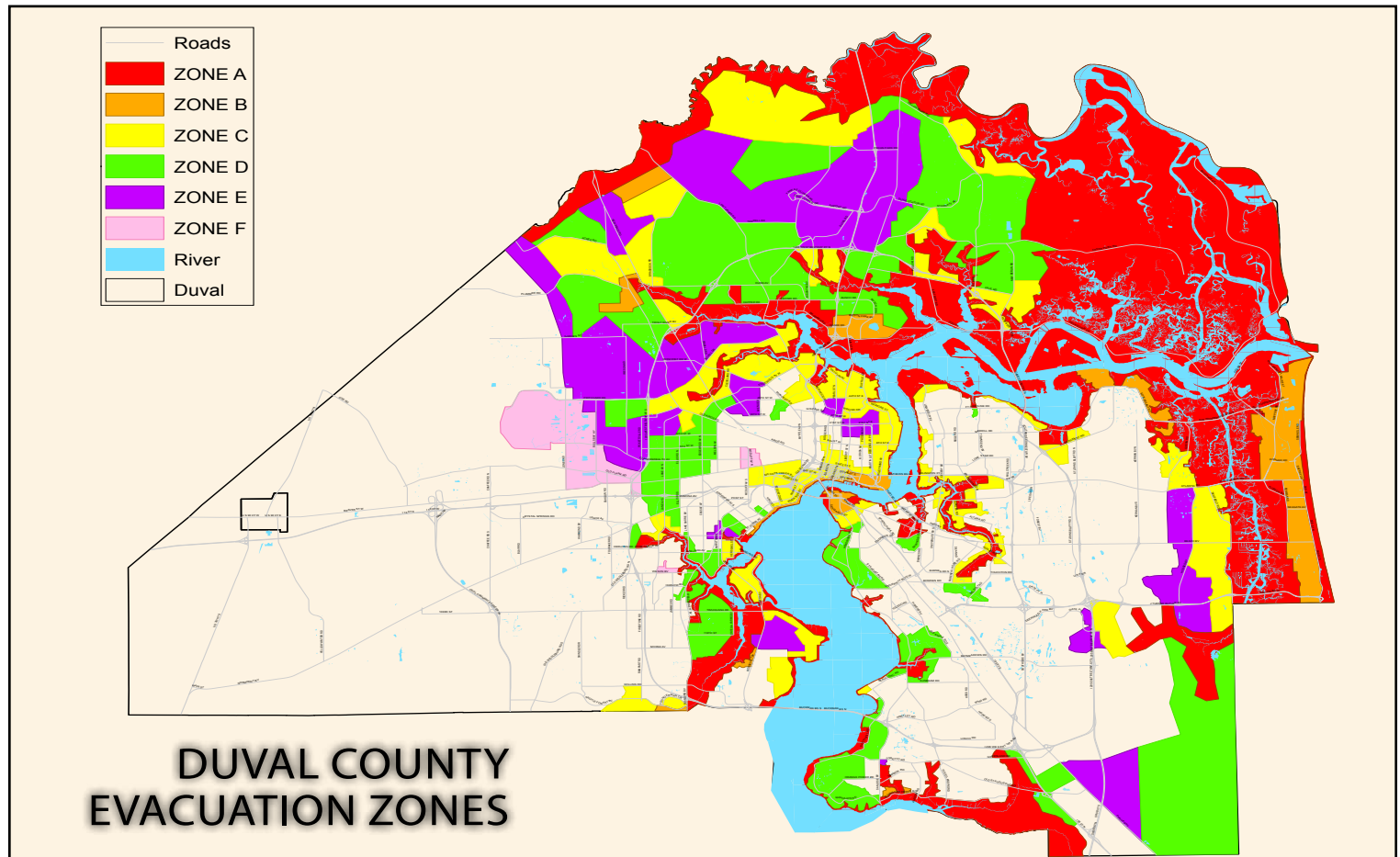
34586 Ball Park Road
Callahan, FL 32011

Hilliard Elementary

27568 Ohio St.
Hilliard, FL 32045

West Nassau High School

1 Warrior Drive
Callahan, FL 32011



Pet-Friendly General Population Shelter

Callahan Middle

450121 Old Dixie Highway
Callahan, FL 32011

Special Needs Evacuation Shelters (requires annual registration before hurricane season)

Hilliard Middle-Senior High School

(Special Needs Only – Registration Required)
1 Flashes Ave.
Hilliard, FL 32045

Shelters of "last resort"

These sites are opened only for overflow, out-of-area evacuees still on the road when tropical-storm-force winds hit, and out-of-area emergency responders.

Yulee High School

85375 Miner Road
Yulee, FL 32097

Yulee Middle School

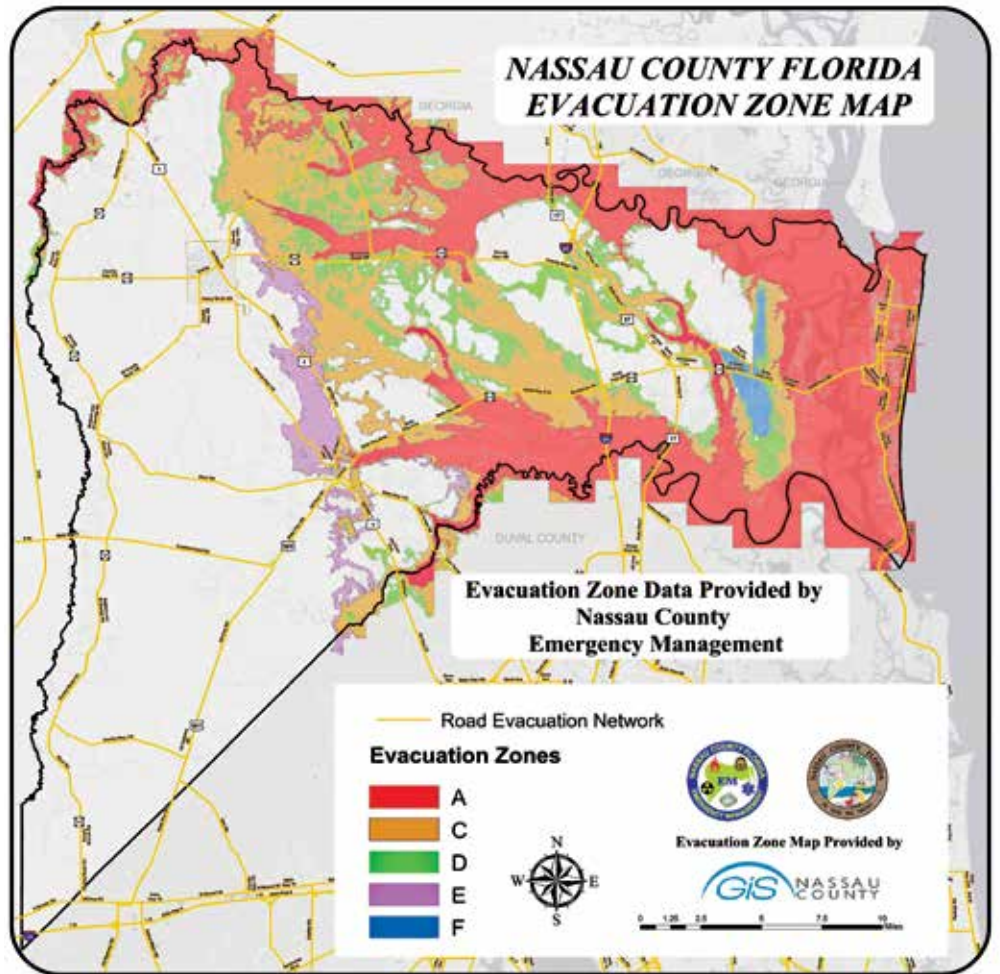
85439 Miner Road
Yulee, FL 32097

Yulee Elementary School

86063 Felmore Road
Yulee, FL 32097

*Pet-Friendly

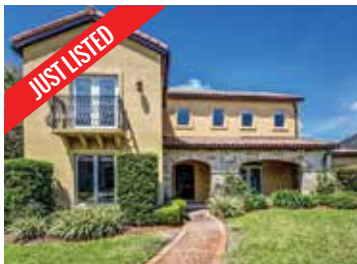
Source: Nassau County Emergency Management



DEDICATED TO EXCELLENT RESULTS



OCEANFRONT SPINNAKERS REACH
719 Spinnaker Reach Drive
\$2,299,000



TUSCANY MEETS COASTAL CONTEMPORARY IN RIVER MARSH
169 River Marsh Drive
\$995,000



PRIVATE OASIS IN SAWGRASS COUNTRY CLUB
3255 Old Barn Road W.
\$1,190,000



2016 Leading Edge Society Member - Top 7%
Janet Westling,
REALTOR®, GRI, CIPS
904.813.1913 Cell
www.janetwestling.com
Janet.Westling@bhhsfnr.com



Here to help you buy, build or renovate.



Ricki Taylor

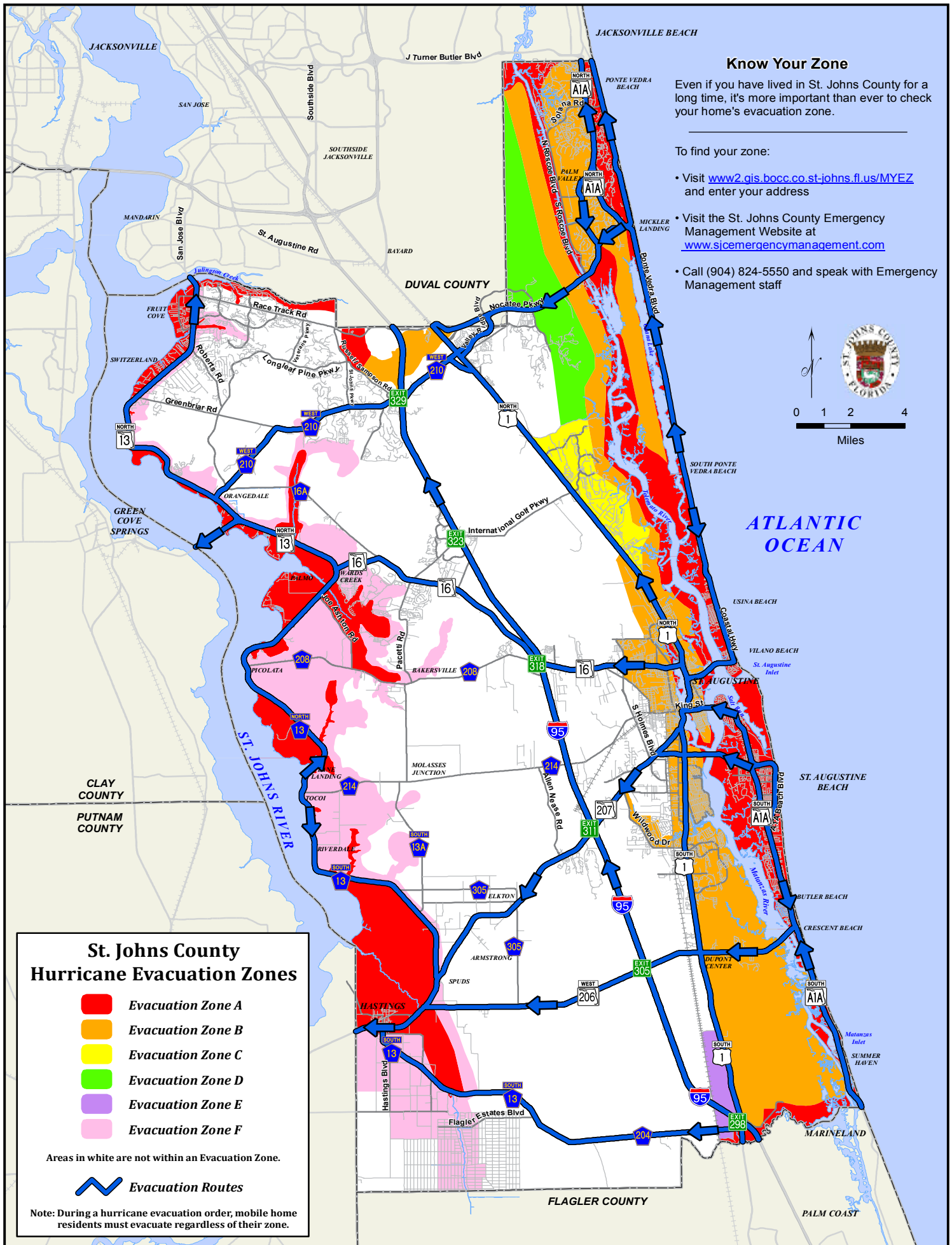
NMLS ID 664168
Market Sales Leader
7768 Ozark Drive
Jacksonville, FL 32256
Office 904.997.7663 Mobile
904.382.1607
rickitaylor@synovusmortgage.com



Winner of the Five Star Professional award for the past 5 years: 2014, 2015, 2016, 2017, 2018 and 2019!



Synovus Mortgage is a subsidiary of Synovus Bank. All loans subjected to credit approval. Equal Housing Lender.

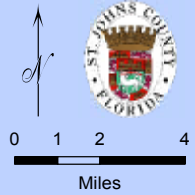


Know Your Zone

Even if you have lived in St. Johns County for a long time, it's more important than ever to check your home's evacuation zone.

To find your zone:

- Visit www2.gis.bocc.co.st-johns.fl.us/MYEZ and enter your address
- Visit the St. Johns County Emergency Management Website at www.sicemergencymanagement.com
- Call (904) 824-5550 and speak with Emergency Management staff



St. Johns County Hurricane Evacuation Zones

- Evacuation Zone A
- Evacuation Zone B
- Evacuation Zone C
- Evacuation Zone D
- Evacuation Zone E
- Evacuation Zone F

Areas in white are not within an Evacuation Zone.

Evacuation Routes

Note: During a hurricane evacuation order, mobile home residents must evacuate regardless of their zone.

COURAGE. INTEGRITY. COMPASSION.

*Bolles students like **Sarah Park '25**, concert violinist (pictured here at Carnegie Hall), have gone on to become judges, Pulitzer Prize winners, Olympians, Rhodes Scholars, renowned artists, professional musicians, CEOs and so much more.*



Experience the **Extraordinary**

Bolles Life includes a superior curriculum and the greatest variety of high-quality educational offerings in Northeast Florida for day and boarding students in grades Pre-K to 12. Extraordinary opportunities and grand discoveries await you in our vibrant, global community.

Unlock your true passions and talents as you build the foundation for a remarkable future. Bolles students

develop a lifelong love of learning, meaningful personal connections, skills to succeed and values to make a difference in the world.

Discover who you are and what you want to become.

For more information on **#BollesLife** and to schedule your tour, please visit www.Bolles.org or call **(904) 256-5030**.

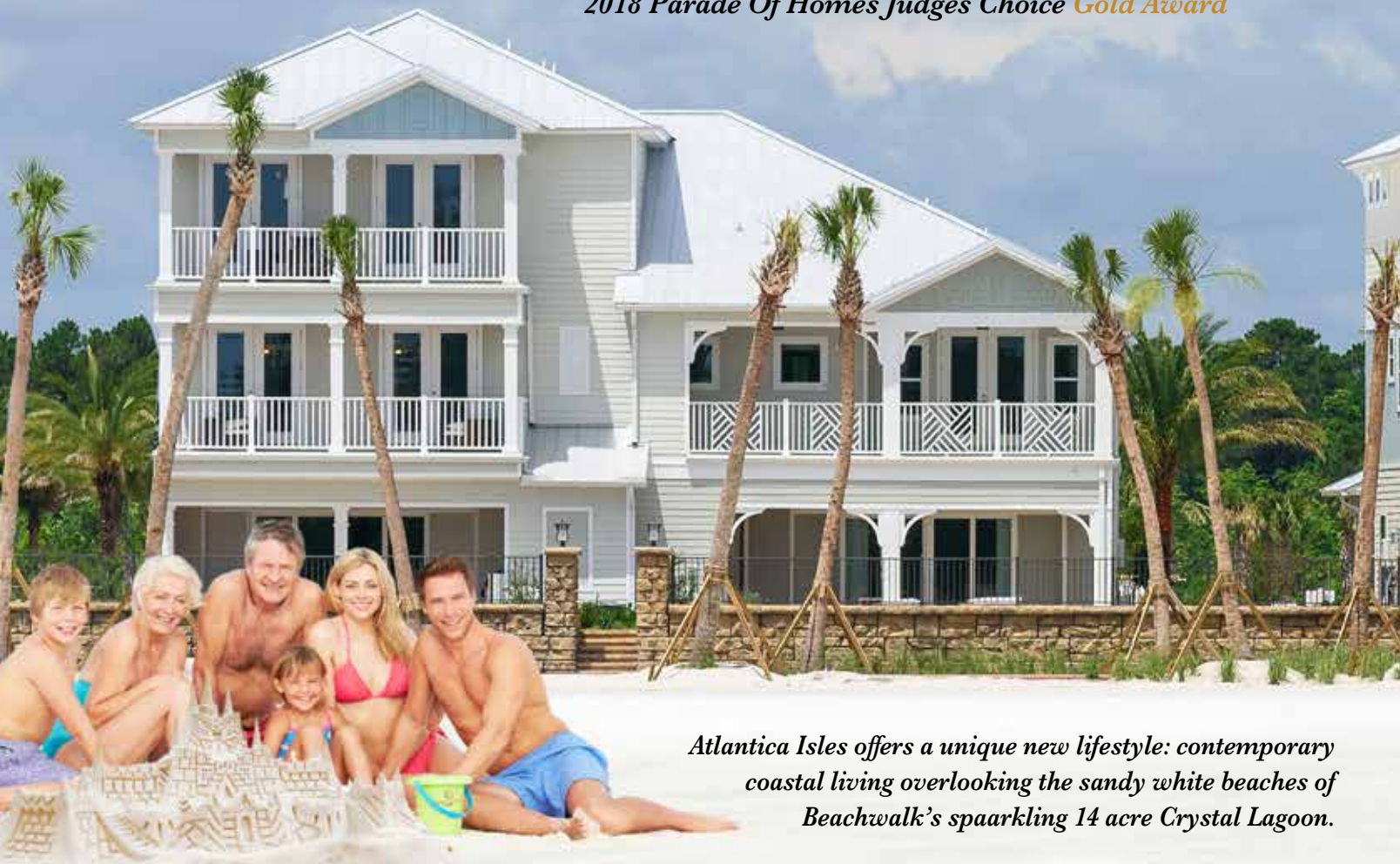
Four Unique Campuses
Ponte Vedra Beach Pre-K-5
Whitehurst Pre-K-5
Bartram 6-8
San Jose 9-12

*Day school Pre-K through 12
and Boarding for Grades 9-12
with 5- and 7-day options.*



BUILD YOUR OWN CASTLE ON THE SAND

2018 Parade Of Homes Judges Choice Gold Award



Atlantica Isles offers a unique new lifestyle: contemporary coastal living overlooking the sandy white beaches of Beachwalk's spaarkling 14 acre Crystal Lagoon.



Atlantica Isles
at Beachwalk

*These 4 beautifully furnished models showcase the latest designs and features, exuding St. Johns County living at its finest.
Grand Opening priced from the low \$500's to over \$1 million.*



AMERICREST
LUXURY HOMES

NO CDD DEBT • MAINTENANCE FREE LIVING
Atlantica Isles at Beachwalk is located 1 mile east of I-95 on County Road 210 (Exit 329).

Please visit our website AmericrestLuxuryHomes.com or call 904-770-3001 for details on Atlantica Isles at Beachwalk.

*Prices and offers are subject to change without notice. Beachwalk® is a registered service mark of PRH Investments, LLC. Use of the service mark by Twin Creeks Development Associates, LLC is by written license agreement with the owner.

